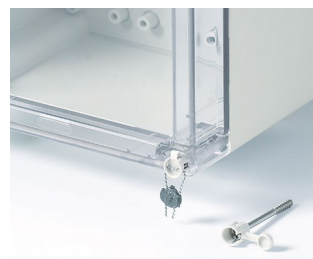
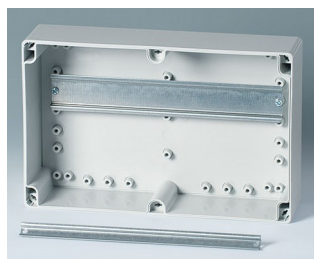


IN-BOX

Robusti contenitori industriali

Il programma IN-BOX offre molte opzioni diverse di contenitori per morsetti e componenti elettronici.

- 9 contenitori di base con superficie lucidata a specchio e altezze diverse
- Due materiali standard: ABS (UL 94 HB) oppure PC (V-2); tutti i contenitori della serie in PC soddisfano lo standard di infiammabilità UL 94 5V (migliore di V-0), sebbene il materiale appartenga solo alla categoria V-2
- Elevati gradi di protezione IP 66/67; guarnizione già fissata con espanso nella parte superiore
- Elevata resistenza all'urto IK 07 (ABS), IK08 (PC)
- Parte superiore nel colore del contenitore o trasparente
- Pratica chiusura rapida in acciaio inox
- Superficie di comando incavata a protezione della tastiera a membrana
- Montaggio a muro diretto o fissaggio esterno con linguette per pareti; se necessario è possibile impiegare una cerniera interna
- Set di sicurezza opzionale per proteggere il contenitore dall'accesso non autorizzato
- Guide DIN e piastre di montaggio per una configurazione individuale del montaggio
- Punti di fissaggio integrati per schede, guide DIN, piastre di montaggio e componenti di montaggio



IN-BOX

Esempi di applicazione

- Predestinati per gli impianti elettrici, ad es. nella tecnica di riscaldamento, condizionamento e ventilazione per apparecchi di controllo e di monitoraggio, nella realizzazione di sistemi di controllo e di impianti, dei sistemi di sicurezza ecc.
- Ma utilizzabili anche in ambito elettronico, ad es. per strumenti di misura digitali o analogici, sensori, come contenitori per interfacce, dispositivi di allarme, ecc.
- Smart Factory / Industrie 4.0



Chicken Door



Monitoring with temperature sensor



Vibration meter for centrifuges

Modifiche specifiche del cliente

Che caratteristiche deve avere il vostro prodotto personalizzato? Su richiesta vi forniamo i contenitori e manopole pronti per il montaggio e con tutte le modifiche e le caratteristiche specifiche.

Opzioni prodotto per In-Box



Lavorazione meccanica



Stampa



Marcatura laser



Pellicole decorative



Protezione CEM



Confezionamento / montaggio

IN-BOX

Versioni



C7008011
IN-BOX
ABS (UL 94 HB)
light grey RAL 7035
84x82x55mm
IP 66, IP 67, IK 07



C7008012
IN-BOX
PC
light grey RAL 7035
84x82x55mm
IP 66, IP 67, IK 08



C7008014
IN-BOX
ABS/PC (UL 94 HB)
light grey RAL 7035
84x82x55mm
IP 66, IP 67, IK 07



C7008015
IN-BOX
PC
light grey RAL 7035
84x82x55mm
IP 66, IP 67, IK 08



C7008021
IN-BOX
ABS (UL 94 HB)
light grey RAL 7035
84x82x85mm
IP 66, IP 67, IK 07



C7008024
IN-BOX
ABS/PC (UL 94 HB)
light grey RAL 7035
84x82x85mm
IP 66, IP 67, IK 07



C7008025
IN-BOX
PC
light grey RAL 7035
84x82x85mm
IP 66, IP 67, IK 08



C7012011
IN-BOX
ABS (UL 94 HB)
light grey RAL 7035
122x82x55mm
IP 66, IP 67, IK 07



C7012012
IN-BOX
PC
light grey RAL 7035
122x82x55mm
IP 66, IP 67, IK 08



C7012014
IN-BOX
ABS/PC (UL 94 HB)
light grey RAL 7035
122x82x55mm
IP 66, IP 67, IK 07



C7012015
IN-BOX
PC
light grey RAL 7035
122x82x55mm
IP 66, IP 67, IK 08



C7012021
IN-BOX
ABS (UL 94 HB)
light grey RAL 7035
122x82x85mm
IP 66, IP 67, IK 07



C7012024
IN-BOX
ABS/PC (UL 94 HB)
light grey RAL 7035
122x82x85mm
IP 66, IP 67, IK 07



C7012025
IN-BOX
PC
light grey RAL 7035
122x82x85mm
IP 66, IP 67, IK 08



C7013031
IN-BOX
ABS (UL 94 HB)
light grey RAL 7035
124x122x55mm
IP 66, IP 67, IK 07



C7013032
IN-BOX
PC
light grey RAL 7035
124x122x55mm
IP 66, IP 67, IK 08

IN-BOX



C7013034
IN-BOX
ABS/PC (UL 94 HB)
light grey RAL 7035
124x122x55mm
IP 66, IP 67, IK 07



C7013035
IN-BOX
PC
light grey RAL 7035
124x122x55mm
IP 66, IP 67, IK 08



C7013051
IN-BOX
ABS (UL 94 HB)
light grey RAL 7035
124x122x85mm
IP 66, IP 67, IK 07



C7013054
IN-BOX
ABS/PC (UL 94 HB)
light grey RAL 7035
124x122x85mm
IP 66, IP 67, IK 07



C7013055
IN-BOX
PC
light grey RAL 7035
124x122x85mm
IP 66, IP 67, IK 08



C7016011
IN-BOX
ABS (UL 94 HB)
light grey RAL 7035
162x82x55mm
IP 66, IP 67, IK 07



C7016012
IN-BOX
PC
light grey RAL 7035
162x82x55mm
IP 66, IP 67, IK 08



C7016014
IN-BOX
ABS/PC (UL 94 HB)
light grey RAL 7035
162x82x55mm
IP 66, IP 67, IK 07



C7016015
IN-BOX
PC
light grey RAL 7035
162x82x55mm
IP 66, IP 67, IK 08



C7016021
IN-BOX
ABS (UL 94 HB)
light grey RAL 7035
162x82x85mm
IP 66, IP 67, IK 07



C7016024
IN-BOX
ABS/PC (UL 94 HB)
light grey RAL 7035
162x82x85mm
IP 66, IP 67, IK 07



C7016025
IN-BOX
PC
light grey RAL 7035
162x82x85mm
IP 66, IP 67, IK 08



C7016061
IN-BOX
ABS (UL 94 HB)
light grey RAL 7035
162x122x90mm
IP 66, IP 67, IK 07



C7016062
IN-BOX
PC
light grey RAL 7035
162x122x90mm
IP 66, IP 67, IK 08



C7016064
IN-BOX
ABS/PC (UL 94 HB)
light grey RAL 7035
162x122x90mm
IP 66, IP 67, IK 07



C7016065
IN-BOX
PC
light grey RAL 7035
162x122x90mm
IP 66, IP 67, IK 08

IN-BOX



C7020041
 IN-BOX
 ABS (UL 94 HB)
 light grey RAL 7035
 202x122x75mm
 IP 66, IP 67, IK 07



C7020042
 IN-BOX
 PC
 light grey RAL 7035
 202x122x75mm
 IP 66, IP 67, IK 08



C7020044
 IN-BOX
 ABS/PC (UL 94 HB)
 transparent
 202x122x75mm
 IP 66, IP 67, IK 07



C7020045
 IN-BOX
 PC
 transparent
 202x122x75mm
 IP 66, IP 67, IK 08



C7020061
 IN-BOX
 ABS (UL 94 HB)
 light grey RAL 7035
 202x122x90mm
 IP 66, IP 67, IK 07



C7020064
 IN-BOX
 ABS/PC (UL 94 HB)
 light grey RAL 7035
 202x122x90mm
 IP 66, IP 67, IK 07



C7020065
 IN-BOX
 PC
 light grey RAL 7035
 202x122x90mm
 IP 66, IP 67, IK 08



C7021071
 IN-BOX
 ABS (UL 94 HB)
 light grey RAL 7035
 202x152x90mm
 IP 66, IP 67, IK 07



C7021072
 IN-BOX
 PC
 light grey RAL 7035
 202x152x90mm
 IP 66, IP 67, IK 08



C7021074
 IN-BOX
 ABS/PC (UL 94 HB)
 light grey RAL 7035
 202x152x90mm
 IP 66, IP 67, IK 07



C7021075
 IN-BOX
 PC
 light grey RAL 7035
 202x152x90mm
 IP 66, IP 67, IK 08



C7025081
 IN-BOX
 ABS (UL 94 HB)
 light grey RAL 7035
 252x162x90mm
 IP 66, IP 67, IK 07



C7025082
 IN-BOX
 PC
 light grey RAL 7035
 252x162x90mm
 IP 66, IP 67, IK 08



C7025084
 IN-BOX
 ABS/PC (UL 94 HB)
 light grey RAL 7035
 252x162x90mm
 IP 66, IP 67, IK 07



C7025085
 IN-BOX
 PC
 light grey RAL 7035
 252x162x90mm
 IP 66, IP 67, IK 08



C7025091
 IN-BOX
 ABS (UL 94 HB)
 light grey RAL 7035
 252x162x120mm
 IP 66, IP 67, IK 07

IN-BOX



C7025094
IN-BOX
ABS/PC (UL 94 HB)
light grey RAL 7035
252x162x120mm
IP 66, IP 67, IK 07



C7025095
IN-BOX
PC
light grey RAL 7035
252x162x120mm
IP 66, IP 67, IK 08



C7030101
IN-BOX
ABS (UL 94 HB)
light grey RAL 7035
302x232x90mm
IP 66, IP 67, IK 07



C7030102
IN-BOX
PC
light grey RAL 7035
302x232x90mm
IP 66, IP 67, IK 08



C7030104
IN-BOX
ABS/PC (UL 94 HB)
light grey RAL 7035
302x232x90mm
IP 66, IP 67, IK 07



C7030105
IN-BOX
PC
light grey RAL 7035
302x232x90mm
IP 66, IP 67, IK 08



C7030111
IN-BOX
ABS (UL 94 HB)
light grey RAL 7035
302x232x110mm
IP 66, IP 67, IK 07



C7030112
IN-BOX
PC
light grey RAL 7035
302x232x110mm
IP 66, IP 67, IK 08



C7030114
IN-BOX
ABS/PC (UL 94 HB)
light grey RAL 7035
302x232x110mm
IP 66, IP 67, IK 07



C7030115
IN-BOX
PC
light grey RAL 7035
302x232x110mm
IP 66, IP 67, IK 08

Accessory "protection"



C2306917
Pressure equalisation element
M6x0.75
PA 6 (UL 94 HB)
light grey RAL 7035
IP 56



C2310917
Pressure equalisation element
M10x1
PA 6 (UL 94 HB)
light grey RAL 7035
IP 56



C2320137
Cable grommet
EPDM
light grey RAL 7035
IP 67



C7100128
Security kit
PP

IN-BOX



C7100138
Security kit
PP

Accessory "wall/holder"



C7100092
Wall-mounting brackets
PC GF15



C7100142
Inside hinge
PC

Accessory "screws"



C7100167
Screw 3.9 x 9 mm

Accessory



C7110056
Mounting plate
73x53x2,5mm



C7110077
Standard DIN rail, Type TH 35
Steel
66x35x7,5mm



C7110087
Standard DIN rail, Type TH 15
Steel
66x15x5,5mm



C7111056
Mounting plate
91x73x2,5mm

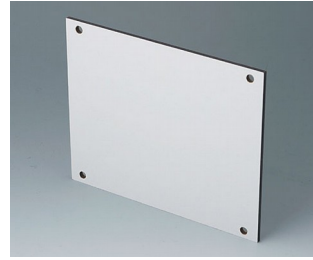
IN-BOX



C7111077
 Standard DIN rail, Type TH 35
 Steel
 104x35x7,5mm



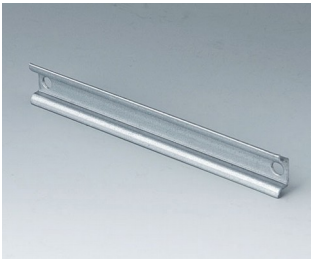
C7111087
 Standard DIN rail, Type TH 15
 Steel
 104x15x5,5mm



C7112056
 Mounting plate
 113x93x2,5mm



C7112077
 Standard DIN rail, Type TH 35
 Steel
 108x35x7,5mm



C7112087
 Standard DIN rail, Type TH 15
 Steel
 108x15x5,5mm



C7113056
 Mounting plate
 131x73x2,5mm



C7113077
 Standard DIN rail, Type TH 35
 Steel
 144x35x7,5mm



C7113087
 Standard DIN rail, Type TH 15
 Steel
 144x15x5,5mm



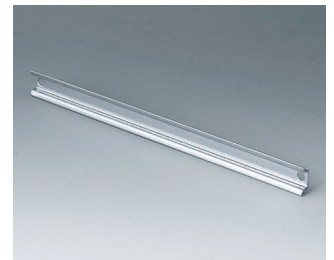
C7114056
 Mounting plate
 131x113x2,5mm



C7115056
 Mounting plate
 171x113x2,5mm



C7115077
 Standard DIN rail, Type TH 35
 Steel
 184x35x7,5mm



C7115087
 Standard DIN rail, Type TH 15
 Steel
 184x15x5,5mm



C7116056
 Mounting plate
 171x143x2,5mm



C7116077
 Standard DIN rail, Type TH 35
 Steel
 168x35x7,5mm

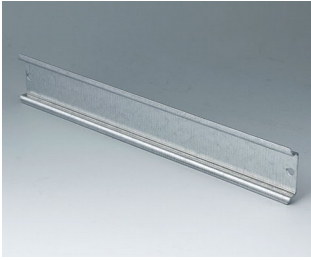


C7116087
 Standard DIN rail, Type TH 15
 Steel
 168x15x5,5mm

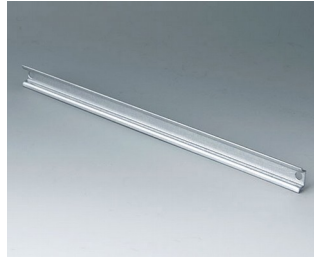


C7117056
 Mounting plate
 220,5x152,5x2,5mm

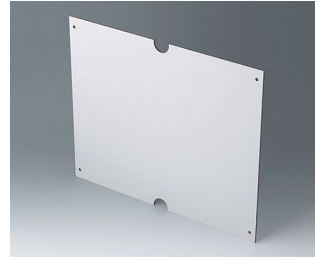
IN-BOX



C7117077
Standard DIN rail, Type TH 35
Steel
220x35x7,5mm



C7117087
Standard DIN rail, Type TH 15
Steel
220x15x5,5mm



C7118056
Mounting plate
270,5x222,5x2,5mm



C7118077
Standard DIN rail, Type TH 35
Steel
283,5x35x7,5mm



C7118087
Standard DIN rail, Type TH 15
Steel
283,5x15x5,5mm

Salvo modifiche tecniche. © OKW Gehäusesysteme, Buchen/Germania.