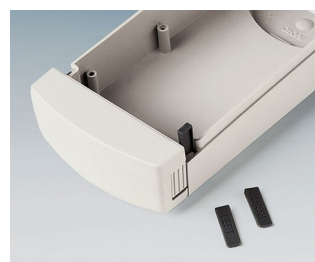
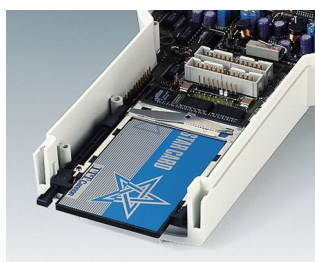
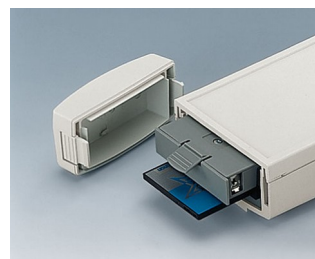


DATEC-CONTROL

Contenitori per applicazioni mobili con display di grandi dimensioni

La forma rotonda della testa nella serie dei contenitori per applicazioni mobili DATEC-CONTROL permette l'integrazione di display grafici più grandi che offrono un maggiore comfort agli utilizzatori.

- Integrazione di display grafici standardizzati
- Particolarmente pratico da usare grazie all'impugnatura di piccole dimensioni
- Grado di protezione elevato: IP 65 (XS, S) o IP 54 (M, L) con l'impiego di set di guarnizioni e delle lastre dei display
- 4 misure, ciascuna in 2 colori
- **DATEC-CONTROL XS**
- Con/senza vano batteria per 2/3 batterie AA o 1 da 9 V avvitato, il coperchio del vano batteria è disponibile a scelta con arresto a scatto e/o con avvitamento, base come versione da scrivania
- **DATEC-CONTROL S**
- Con/senza vano batteria per 4 batterie AA o 1 da 9 V avvitato, il coperchio del vano batteria è disponibile a scelta con arresto a scatto e/o con avvitamento, base come versione da scrivania
- **DATEC-CONTROL M, L**
- Con/senza vano batteria sostituibile, fino a 5 batterie AA, con arresto a scatto; spazio per schede PCMCIA; base di carica con vano accumulatore come versione da scrivania/da parete
- Semplice trasmissione di dati e di corrente di carica, base e contatti come accessori
- Set supporto da parete per il deposito sicuro (accessorio)
- Protezioni che assorbono gli urti e riparano le superfici (accessorio), misure M e L con cinturino di supporto supplementare
- Superficie di comando incavata a protezione della tastiera a membrana
- Punti di fissaggio per schede e componenti di montaggio



DATEC-CONTROL

Esempi di applicazione

- Rilevamento e trasmissione di dati mobile mediante modem, ISDN o a raggi infrarossi
- Metrologia e tecnica di regolazione
- Tecnica di comando digitale
- Industria meccanica e impiantistica
- Smart Factory
- Industrie 4.0



BIOFIT test unit for eye frequency



Hand-held measuring device for soil and water



Mobile balance display unit in a football stadium



Mobile HMI Terminal



Modular measuring system for universal use



Pretension tester for V-belts and toothed belts

Modifiche specifiche del cliente

Che caratteristiche deve avere il vostro prodotto personalizzato? Su richiesta vi forniamo i contenitori e manopole pronti per il montaggio e con tutte le modifiche e le caratteristiche specifiche.
Opzioni prodotto per Datec-Control



Lavorazione meccanica



Verniciatura



Stampa



Marcatura laser



Pellicole decorative



Materiale speciale



Protezione CEM



Confezionamento / montaggio

DATEC-CONTROL

Versioni



A9076107
DATEC-CONTROL XS, Vers. I
ABS (UL 94 HB)
off-white RAL 9002
200x94x39,5mm
IP 65 opt.



A9076109
DATEC-CONTROL XS, Vers. I
ABS (UL 94 HB)
black RAL 9005
200x94x39,5mm
IP 65 opt.



A9076157
SET: DATEC-CONTROL XS,
Vers. I, station..
ABS (UL 94 HB)
off-white RAL 9002
200x94mm
IP 65 opt.



A9076159
SET: DATEC-CONTROL XS,
Vers. I, station..
ABS (UL 94 HB)
black RAL 9005
200x94mm
IP 65 opt.



A9076207
DATEC-CONTROL XS, Vers. II
ABS (UL 94 HB)
off-white RAL 9002
200x94x39,5mm
IP 65 opt.



A9076209
DATEC-CONTROL XS, Vers. II
ABS (UL 94 HB)
black RAL 9005
200x94x40mm
IP 65 opt.



A9076257
SET: DATEC-CONTROL XS,
Vers. II, station..
ABS (UL 94 HB)
off-white RAL 9002
200x94mm
IP 65 opt.



A9076259
SET: DATEC-CONTROL XS,
Vers. II, station..
ABS (UL 94 HB)
black RAL 9005
200x94mm
IP 65 opt.



A9077107
DATEC-CONTROL S, Vers. I
ABS (UL 94 HB)
off-white RAL 9002
228x117x47mm
IP 65 opt.



A9077109
DATEC-CONTROL S, Vers. I
ABS (UL 94 HB)
black RAL 9005
228x117x47mm
IP 65 opt.



A9077157
SET: DATEC-CONTROL S, Vers.
I, station..
ABS (UL 94 HB)
off-white RAL 9002
228x117mm
IP 65 opt.



A9077159
SET: DATEC-CONTROL S, Vers.
I, station..
ABS (UL 94 HB)
black RAL 9005
228x117mm
IP 65 opt.

DATEC-CONTROL



A9077207
DATEC-CONTROL S, Vers. II
ABS (UL 94 HB)
off-white RAL 9002
228x117x47mm
IP 65 opt.



A9077209
DATEC-CONTROL S, Vers. II
ABS (UL 94 HB)
black RAL 9005
228x117x47mm
IP 65 opt.



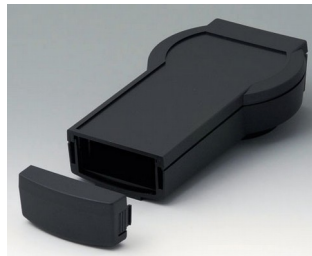
A9077257
SET: DATEC-CONTROL S, Vers. II, station..
ABS (UL 94 HB)
off-white RAL 9002
228x117mm
IP 65 opt.



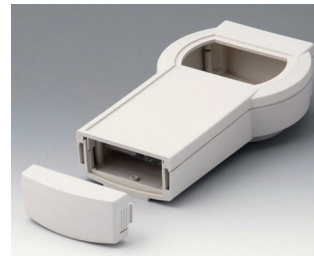
A9077259
SET: DATEC-CONTROL S, Vers. II, station..
ABS (UL 94 HB)
black RAL 9005
228x117mm
IP 65 opt.



A9078107
DATEC-CONTROL M, Vers. I
ABS (UL 94 HB)
off-white RAL 9002
243x130x60mm
IP 54 opt.



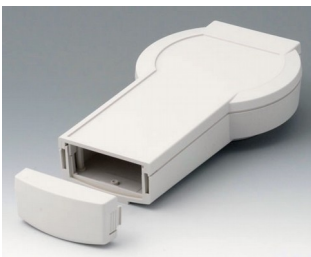
A9078109
DATEC-CONTROL M, Vers. I
ABS (UL 94 HB)
black RAL 9005
243x130x60mm
IP 54 opt.



A9078207
DATEC-CONTROL M, Vers. II
ABS (UL 94 HB)
off-white RAL 9002
243x130x60mm
IP 54 opt.



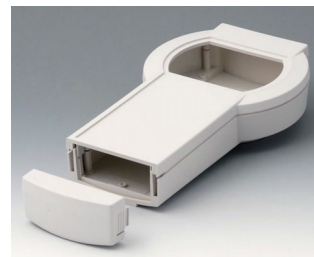
A9078209
DATEC-CONTROL M, Vers. II
ABS (UL 94 HB)
black RAL 9005
243x130x60mm
IP 54 opt.



A9079107
DATEC-CONTROL L, Vers. I
ABS (UL 94 HB)
off-white RAL 9002
266x144x60mm
IP 54 opt.



A9079109
DATEC-CONTROL L, Vers. I
ABS (UL 94 HB)
black RAL 9005
266x144x60mm
IP 54 opt.

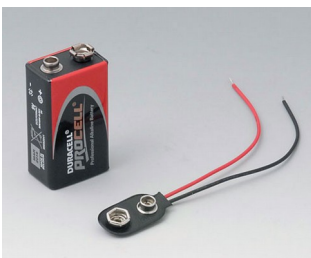


A9079207
DATEC-CONTROL L, Vers. II
ABS (UL 94 HB)
off-white RAL 9002
266x144x60mm
IP 54 opt.



A9079209
DATEC-CONTROL L, Vers. II
ABS (UL 94 HB)
black RAL 9005
266x144x60mm
IP 54 opt.

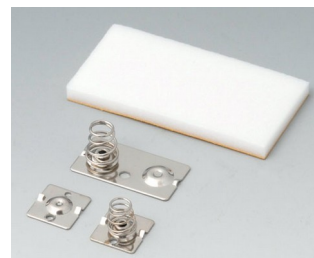
Accessory "battery"



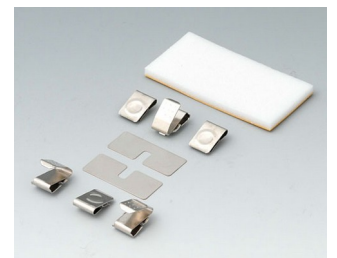
A9160003
Plug-in contact, 1 x 9 V (PP3)



A9174006
Set of battery clips, 1 x 9 V
Steel
tin-plated

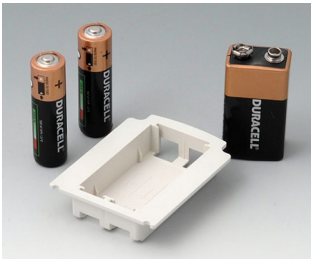


A9176007
Set of battery clips, 2 x AA
Steel
nickel-plated



A9176008
Set of battery clips, 3 x AA
Steel
nickel-plated

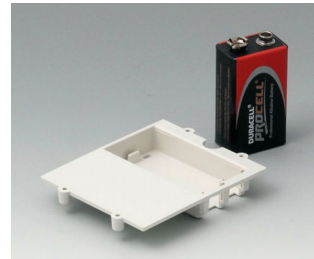
DATEC-CONTROL



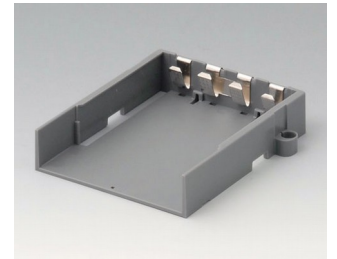
A9176128
Battery compartment XS, 2 x AA
or 1 x 9V
ABS (UL 94 HB)



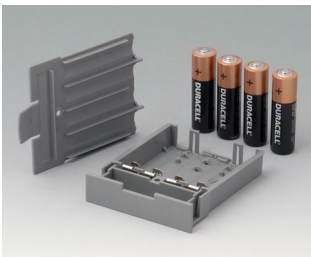
A9176158
Battery compartment XS, 3 x AA
ABS (UL 94 HB)
off-white RAL 9002



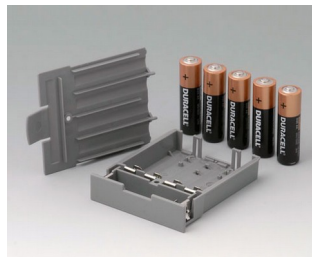
A9177310
Battery compartment, 1 x 9 V
ABS (UL 94 HB)



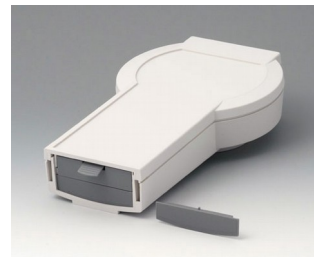
A9178118
Battery compartment holder
PC
volcano



A9178128
Battery compartment, M/L, 4 x
AA
PC
volcano



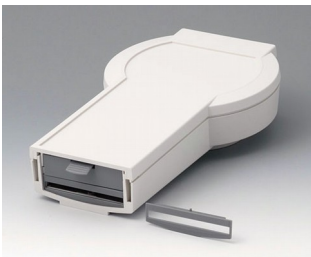
A9178158
Battery compartment, M/L, 5 x
AA
PC
volcano



A9178178
End plate for electronic area,
Vers. I
PC
volcano



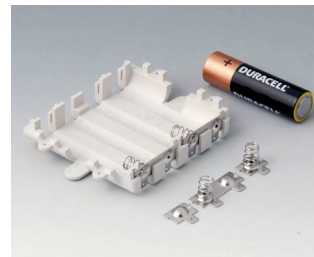
A9178188
End plate for electronic area,
Vers. II
PC
volcano



A9178198
End plate for electronic area,
Vers. III
PC
volcano



A9250250
Battery spacer
PE foam
50x25x4mm



A9345217
Set of battery compartment, 4 x
AA
ABS (UL 94 HB)
off-white RAL 9002

Accessory "station"



A9176137
Station XS
ABS (UL 94 HB)
off-white RAL 9002



A9176139
Station XS
ABS (UL 94 HB)
black RAL 9005

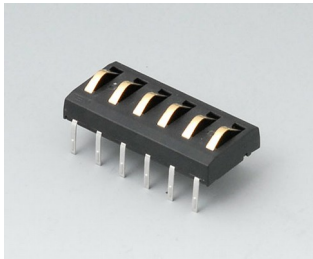


A9177137
Station S
ABS (UL 94 HB)
off-white RAL 9002

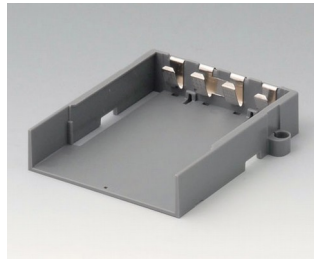


A9177139
Station S
ABS (UL 94 HB)
black RAL 9005

DATEC-CONTROL



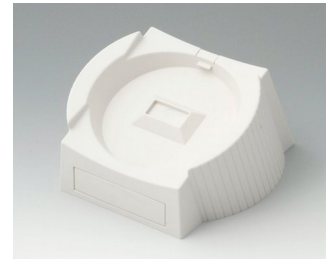
A9178007
 Contacts, male
 gold-plated



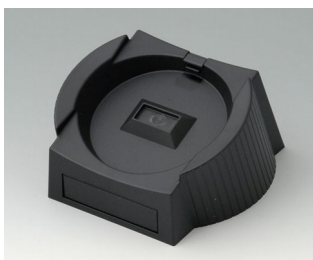
A9178118
 Battery compartment holder
 PC
 volcano



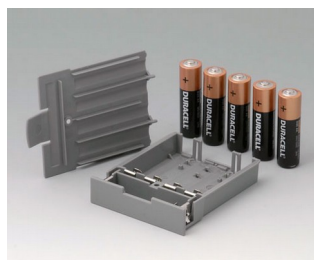
A9178128
 Battery compartment, M/L, 4 x
 AA
 PC
 volcano



A9178137
 Station, Vers. I
 ABS (UL 94 HB)
 off-white RAL 9002



A9178139
 Station, Vers. I
 ABS (UL 94 HB)
 black RAL 9005



A9178158
 Battery compartment, M/L, 5 x
 AA
 PC
 volcano



A9178167
 Station, Vers. II
 ABS (UL 94 HB)
 off-white RAL 9002

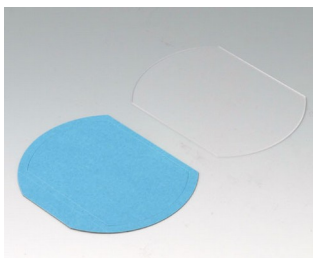


A9178169
 Station, Vers. II
 ABS (UL 94 HB)
 black RAL 9005

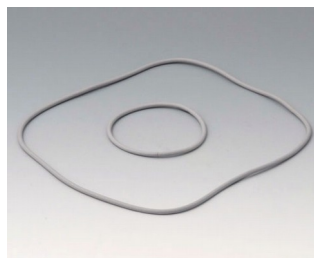


A9199005
 Strain relief
 PA 6
 volcano

Accessory "protection"



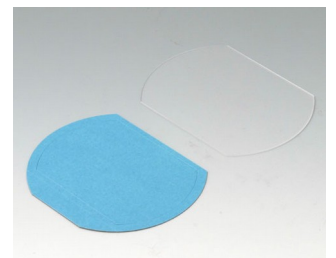
A9176001
 Display window XS
 Acrylic glass
 clear



A9176006
 Sealing kit XS

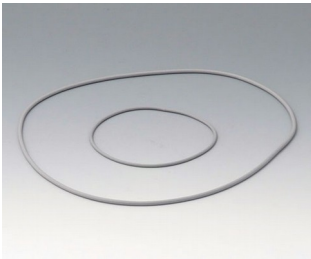


A9176108
 Protector XS
 SBS (TPE)
 volcano



A9177001
 Display window S
 Acrylic glass
 clear

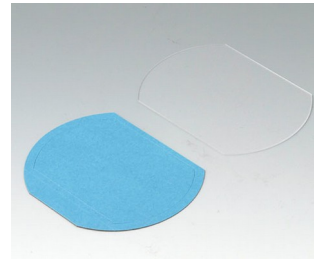
DATEC-CONTROL



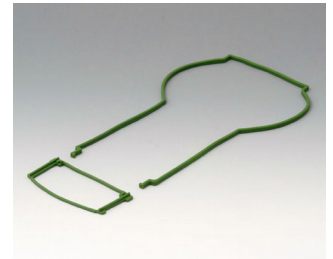
A9177006
 Sealing kit S



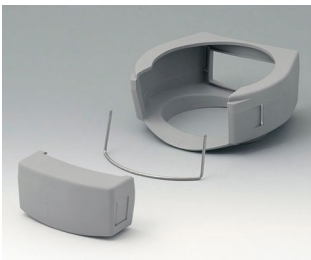
A9177008
 Protector S
 SBS (TPE)
 volcano



A9178001
 Display window M
 Acrylic glass
 clear



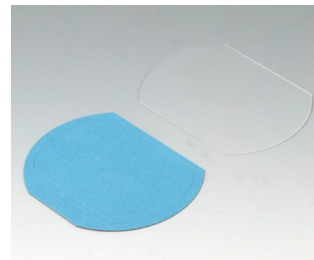
A9178006
 Sealing kit M



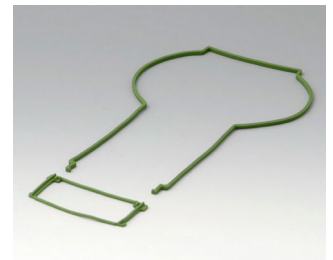
A9178108
 Protector M
 SBS (TPE)
 volcano



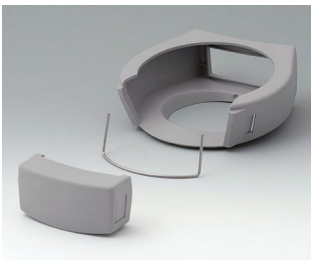
A9178208
 Protector M
 SBS (TPE)
 volcano



A9179001
 Display window L
 Acrylic glass
 clear



A9179006
 Sealing kit L



A9179108
 Protector L
 SBS (TPE)
 volcano



A9179208
 Protector L
 SEBS (TPE)
 volcano

Accessory "wall/holder"



A9226117
 Wall suspension element
 ABS (UL 94 HB)
 off-white RAL 9002



A9226119
 Wall suspension element
 ABS (UL 94 HB)
 black RAL 9005



A9226227
 Wall suspension element
 ABS (UL 94 HB)
 off-white RAL 9002



A9226229
 Wall suspension element
 ABS (UL 94 HB)
 black RAL 9005

DATEC-CONTROL



A9226337
Wall suspension element
ABS (UL 94 HB)
off-white RAL 9002



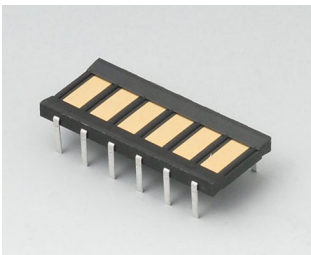
A9226339
Wall suspension element
ABS (UL 94 HB)
black RAL 9005

Accessory "carrying"



A910002
Ring eyelet
PA 6
volcano

Accessory



A9178008
Contacts, female
gold-plated

Salvo modifiche tecniche. © OKW Gehäusesysteme, Buchen/Germania.