

RAILTEC C

Contenitori modulari per guida DIN e supporti modulari

L'ampio programma di contenitori per guida DIN EN 60715 e per il montaggio diretto alla parete. Il programma comprende inoltre supporti modulari per un montaggio personalizzato e maggiore flessibilità con una sostituzione facile delle interfacce.

- Tutti i tipi offrono un elevato grado di flessibilità di montaggio dei componenti e delle operazioni di collegamento
 - Eccezionali proprietà del materiale per notevoli sollecitazioni e un'elevata resistenza termica (UL 94 V-0)
 - Montaggio mediante semplice innesto delle parti del contenitore
 - **RAILTEC C:** per morsetti per circuiti stampati, connettori a pin e connettori frontali; telaio opzionale per ulteriori posizioni del circuito stampato; diverse versioni di placca frontale e copertura frontale; 1-12 larghezze di modulo; per guide DIN EN 60715 TH35; posizionamento dei circuiti stampati in tutte e 3 le direzioni spaziali; adattatore per TH15 e G32 (1-4 moduli) come accessorio
- Versione I Fronte aperto, lato collegamenti liberamente accessibile, senza fessure di ventilazione
- Versione II Fronte aperto, lato collegamenti liberamente accessibile, con fessure di ventilazione
- Versione III Fronte aperto, lato collegamenti con parete contenitore allungata, senza fessure di ventilazione
- Versione IV Fronte chiuso, lato collegamenti liberamente accessibile, senza fessure di ventilazione
- **RAILTEC SUPPORT:** supporti modulari per un montaggio personalizzato dei componenti; per guide DIN EN 60715 TH35, TH15 e G32
 - Grado di protezione IP 40



RAILTEC C

Modifiche specifiche del cliente

Che caratteristiche deve avere il vostro prodotto personalizzato? Su richiesta vi forniamo i contenitori e manopole pronti per il montaggio e con tutte le modifiche e le caratteristiche specifiche.

Opzioni prodotto per Railtec C



Lavorazione
meccanica



Verniciatura



Stampa



Marcatura laser



Pellicole decorative



Confezionamento /
montaggio

Versioni



B6700100
RAILTEC C, 1 module, Vers. I
PC (UL 94 V-0)
light grey
17,5x90x58mm



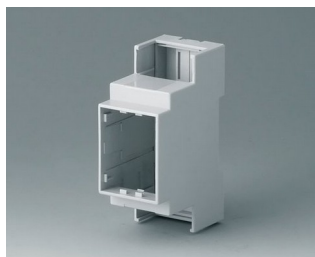
B6700102
RAILTEC C, 1 module, Vers. II
PC (UL 94 V-0)
light grey
17,5x90x58mm



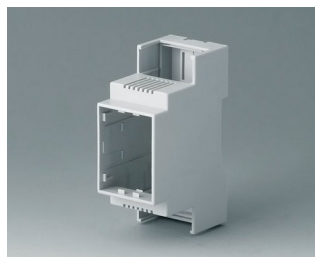
B6700104
RAILTEC C, 1 module, Vers. III
PC (UL 94 V-0)
light grey
17,5x90x58mm



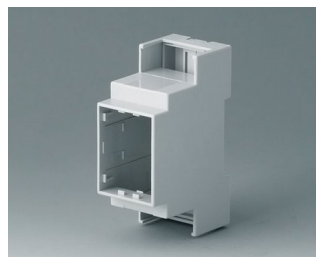
B6700106
RAILTEC C, 1 module, Vers. IV
PC (UL 94 V-0)
light grey
17,5x90x58mm



B6701100
RAILTEC C, 2 modules, Vers. I
PC (UL 94 V-0)
light grey
36x90x58mm



B6701102
RAILTEC C, 2 modules, Vers. II
PC (UL 94 V-0)
light grey
36x90x58mm

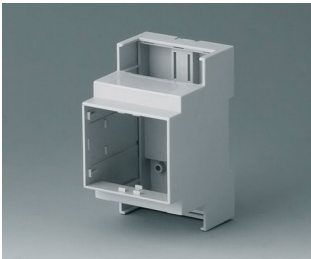


B6701104
RAILTEC C, 2 modules, Vers. III
PC (UL 94 V-0)
light grey
36x90x58mm

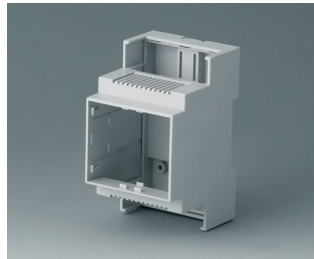


B6701106
RAILTEC C, 2 modules, Vers. IV
PC (UL 94 V-0)
light grey
36x90x58mm

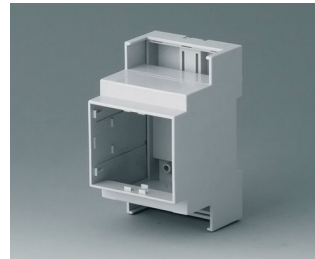
RAILTEC C



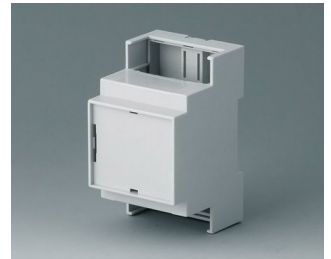
B6702100
 RAILTEC C, 3 modules, Vers. I
 PC (UL 94 V-0)
 light grey
 53x90x58mm



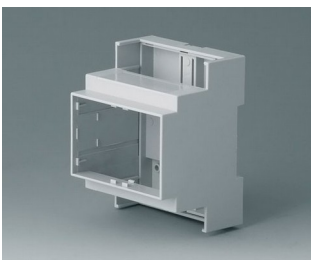
B6702102
 RAILTEC C, 3 modules, Vers. II
 PC (UL 94 V-0)
 light grey
 53x90x58mm



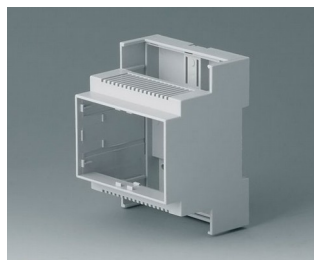
B6702104
 RAILTEC C, 3 modules, Vers. III
 PC (UL 94 V-0)
 light grey
 53x90x58mm



B6702106
 RAILTEC C, 3 modules, Vers. IV
 PC (UL 94 V-0)
 light grey
 53x90x58mm



B6703100
 RAILTEC C, 4 modules, Vers. I
 PC (UL 94 V-0)
 light grey
 71x90x58mm



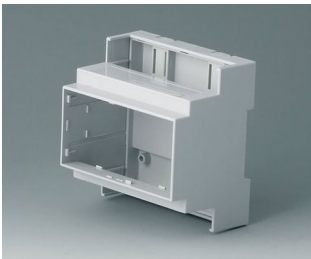
B6703102
 RAILTEC C, 4 modules, Vers. II
 PC (UL 94 V-0)
 light grey
 71x90x58mm



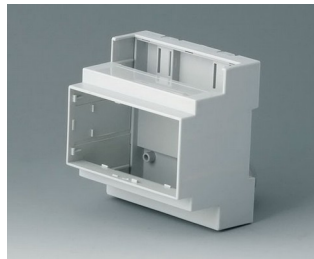
B6703104
 RAILTEC C, 4 modules, Vers. III
 PC (UL 94 V-0)
 light grey
 71x90x58mm



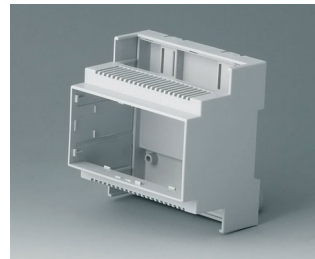
B6703106
 RAILTEC C, 4 modules, Vers. IV
 PC (UL 94 V-0)
 light grey
 71x90x58mm



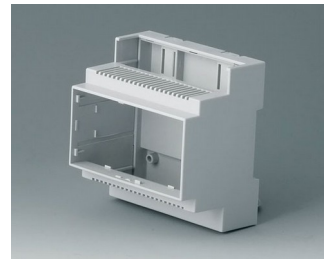
B6704100
 RAILTEC C, 5 modules, Vers. I
 PC (UL 94 V-0)
 light grey
 88x90x58mm



B6704101
 RAILTEC C, 5 modules, Vers. I
 PC (UL 94 V-0)
 light grey
 88x90x58mm



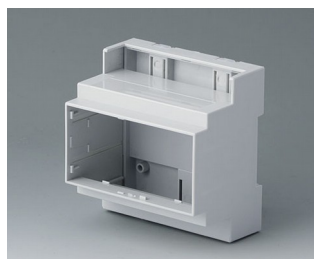
B6704102
 RAILTEC C, 5 modules, Vers. II
 PC (UL 94 V-0)
 light grey
 88x90x58mm



B6704103
 RAILTEC C, 5 modules, Vers. II
 PC (UL 94 V-0)
 light grey
 88x90x58mm



B6704104
 RAILTEC C, 5 modules, Vers. III
 PC (UL 94 V-0)
 light grey
 88x90x58mm



B6704105
 RAILTEC C, 5 modules, Vers. III
 PC (UL 94 V-0)
 light grey
 88x90x58mm

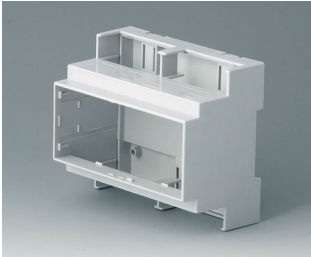


B6704106
 RAILTEC C, 5 modules, Vers. IV
 PC (UL 94 V-0)
 light grey
 88x90x58mm

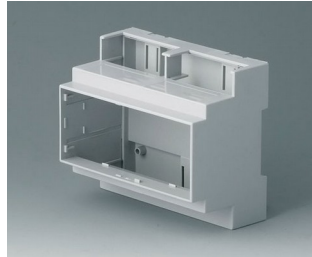


B6704107
 RAILTEC C, 5 modules, Vers. IV
 PC (UL 94 V-0)
 light grey
 88x90x58mm

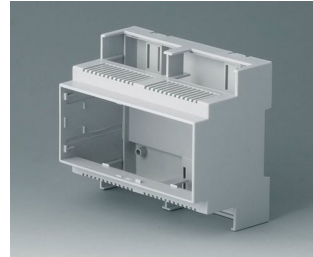
RAILTEC C



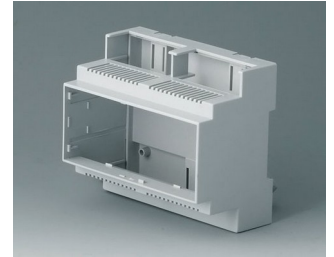
B6705100
 RAILTEC C, 6 modules, Vers. I
 PC (UL 94 V-0)
 light grey
 106x90x58mm



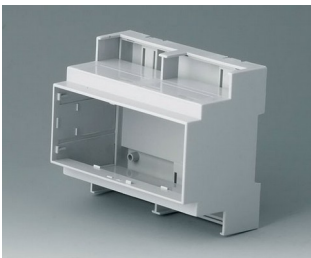
B6705101
 RAILTEC C, 6 modules, Vers. I
 PC (UL 94 V-0)
 light grey
 106x90x58mm



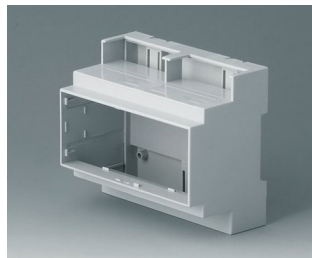
B6705102
 RAILTEC C, 6 modules, Vers. II
 PC (UL 94 V-0)
 light grey
 106x90x58mm



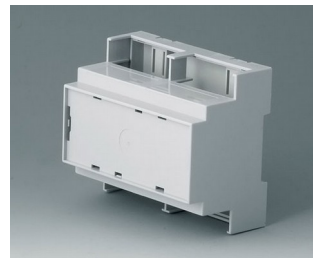
B6705103
 RAILTEC C, 6 modules, Vers. II
 PC (UL 94 V-0)
 light grey
 106x90x58mm



B6705104
 RAILTEC C, 6 modules, Vers. III
 PC (UL 94 V-0)
 light grey
 106x90x58mm



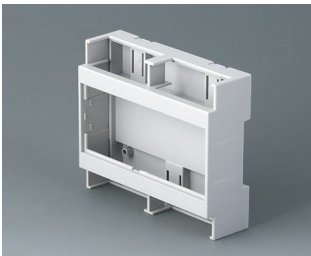
B6705105
 RAILTEC C, 6 modules, Vers. III
 PC (UL 94 V-0)
 light grey
 106x90x58mm



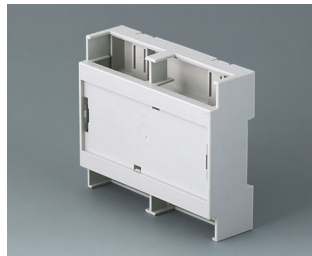
B6705106
 RAILTEC C, 6 modules, Vers. IV
 PC (UL 94 V-0)
 light grey
 106x90x58mm



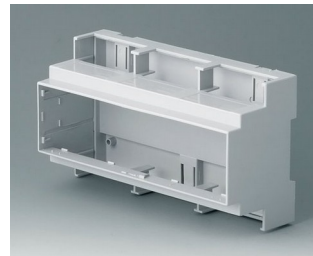
B6705107
 RAILTEC C, 6 modules, Vers. IV
 PC (UL 94 V-0)
 light grey
 106x90x58mm



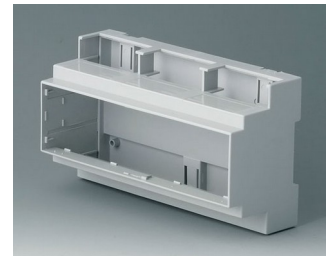
B6705800
 RAILTEC C, 6 modules, flat,
 Vers. I
 PC (UL 94 V-0)
 light grey
 106,2x90x32mm



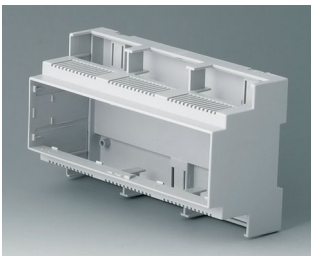
B6705806
 RAILTEC C, 6 modules, flat,
 Vers. IV
 PC (UL 94 V-0)
 light grey
 106,2x90x32mm



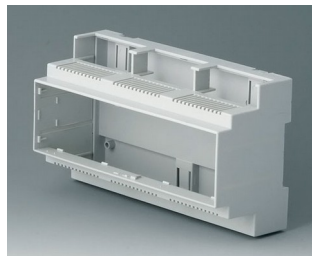
B6706100
 RAILTEC C, 9 modules, Vers. I
 PC (UL 94 V-0)
 light grey
 160x90x58mm



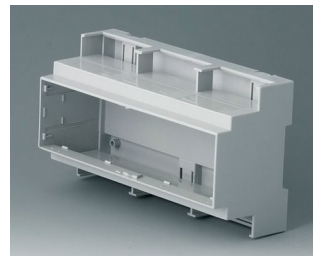
B6706101
 RAILTEC C, 9 modules, Vers. I
 PC (UL 94 V-0)
 light grey
 160x90x58mm



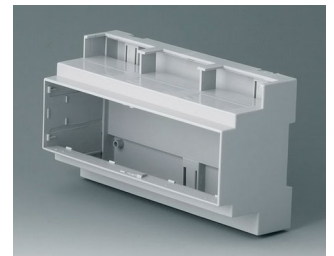
B6706102
 RAILTEC C, 9 modules, Vers. II
 PC (UL 94 V-0)
 light grey
 160x90x58mm



B6706103
 RAILTEC C, 9 modules, Vers. II
 PC (UL 94 V-0)
 light grey
 160x90x58mm

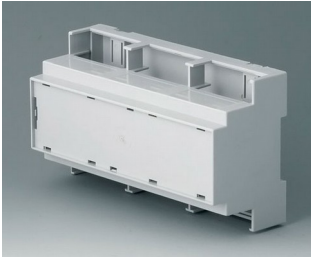


B6706104
 RAILTEC C, 9 modules, Vers. III
 PC (UL 94 V-0)
 light grey
 160x90x58mm

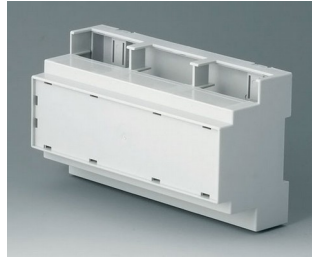


B6706105
 RAILTEC C, 9 modules, Vers. III
 PC (UL 94 V-0)
 light grey
 160x90x58mm

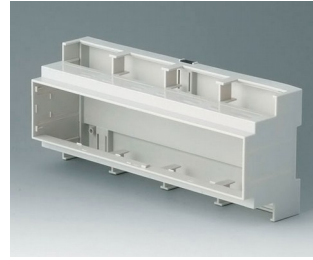
RAILTEC C



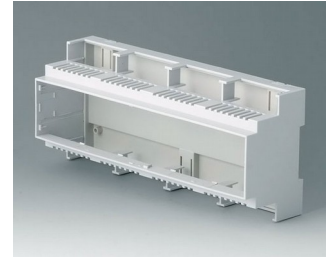
B6706106
 RAILTEC C, 9 modules, Vers. IV
 PC (UL 94 V-0)
 light grey
 160x90x58mm



B6706107
 RAILTEC C, 9 modules, Vers. IV
 PC (UL 94 V-0)
 light grey
 160x90x58mm



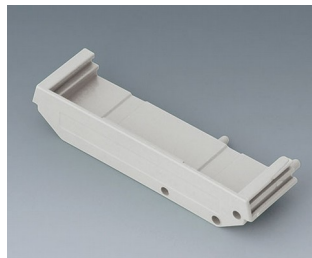
B6707100
 RAILTEC C, 12 modules, Vers. I
 PC (UL 94 V-0)
 light grey
 210x90x58mm



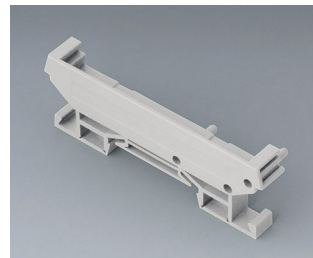
B6707102
 RAILTEC C, 12 modules, Vers. II
 PC (UL 94 V-0)
 light grey
 210x90x58mm



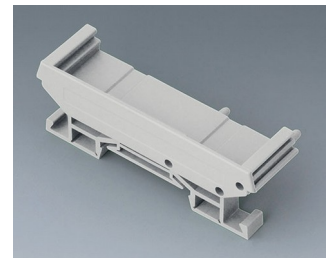
B6724333
 RAILTEC SUP. 72, end section
 PA 6 (30) (UL 94 V-0)
 light grey
 82x11,2x16mm



B6724334
 RAILTEC SUP. 72, end section
 PA 6 (30) (UL 94 V-0)
 light grey
 82x22,2x16mm



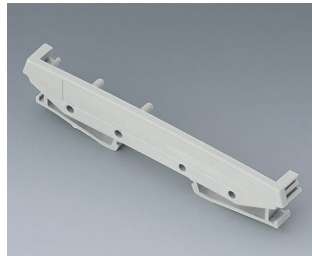
B6724335
 RAILTEC SUP. 72, end section
 with foot
 PA 6 (30) (UL 94 V-0)
 light grey
 82x11,2x22,5mm



B6724336
 RAILTEC SUP. 72, end section
 with foot
 PA 6 (30) (UL 94 V-0)
 light grey
 82x22,2x22,5mm



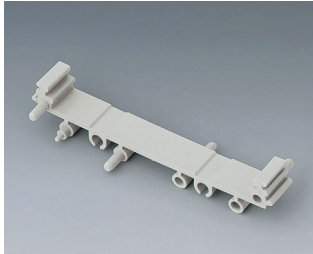
B6724444
 RAILTEC SUP. 107, end section
 PA 6 (30) (UL 94 V-0)
 light grey
 118x11,5x17,5mm



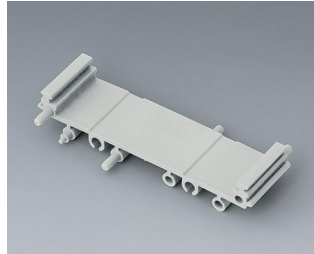
B6724445
 RAILTEC SUP. 107, end section
 with foot
 PA 6 (30) (UL 94 V-0)
 light grey
 118x11,5x27,5mm

RAILTEC C

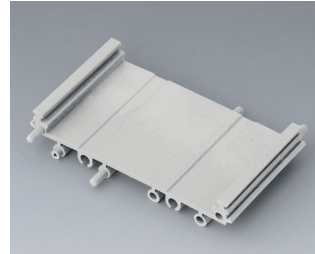
System components to complete



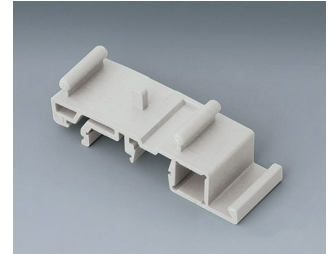
B6724330
RAILTEC SUP. 72, intermediate part
PA 6 (30) (UL 94 V-0)
light grey
82x11,25x16mm



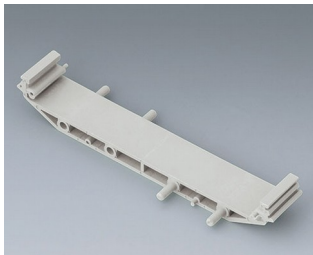
B6724331
RAILTEC SUP. 72, intermediate part
PA 6 (30) (UL 94 V-0)
light grey
82x22,5x16mm



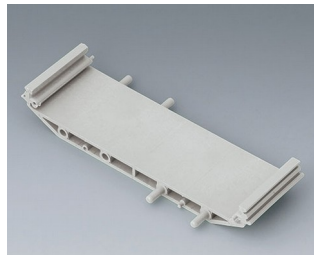
B6724332
RAILTEC SUP. 72, intermediate part
PA 6 (30) (UL 94 V-0)
light grey
82x45x16mm



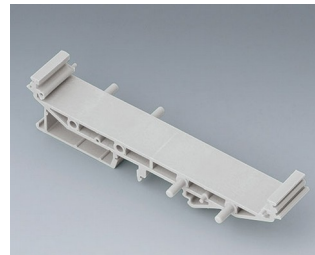
B6724337
RAILTEC SUP. 72, foot
PA 6 (30) (UL 94 V-0)
light grey



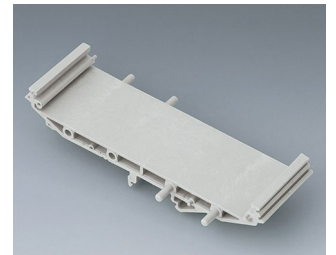
B6724440
RAILTEC SUP. 107, intermediate part
PA 6 (30) (UL 94 V-0)
light grey
118x18,5x17,5mm



B6724441
RAILTEC SUP. 107, intermediate part
PA 6 (30) (UL 94 V-0)
light grey
118x35x17,5mm

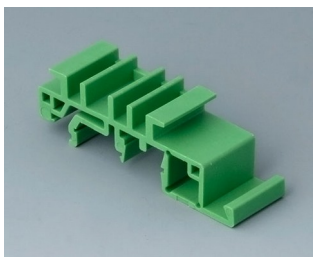


B6724442
RAILTEC SUP. 107, intermediate p. + foot
PA 6 (30) (UL 94 V-0)
light grey
118x18,5x27,5mm



B6724443
RAILTEC SUP. 107, intermediate p. + foot
PA 6 (30) (UL 94 V-0)
light grey
118x35x27,5mm

Accessory "wall/holder"



B6811542
Adapter
PA 6 (UL 94 V-0)
green



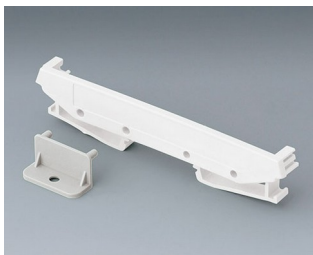
B6824532
Wall suspension element for SUP. 72
PA 6 (30) (UL 94 V-0)
light grey



B6824533
Wall suspension element with foot, SUP. 72
PA 6 (30) (UL 94 V-0)
light grey



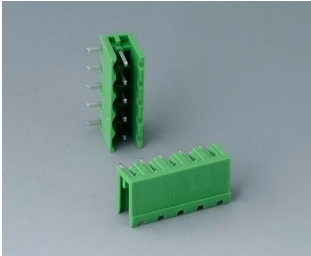
B6824542
Wall suspension element for SUP. 107
PA 6 (30) (UL 94 V-0)
light grey



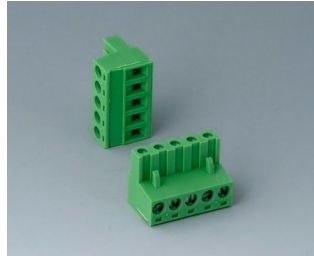
B6824543
Wall suspension element with foot, SUP. 107
PA 6 (30) (UL 94 V-0)
light grey

RAILTEC C

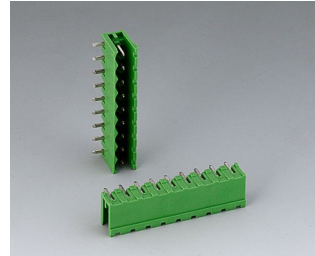
Accessory "terminals"



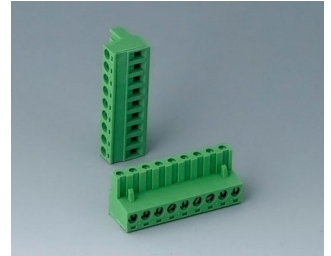
B6601222
Plug header, block 5.08
PA 6 (UL 94 V-0)



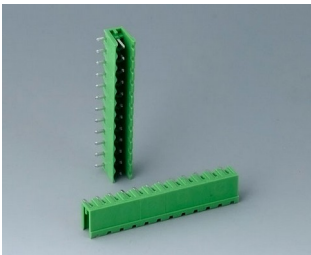
B6601223
Plug header, block 5.08
PA 6 (UL 94 V-0)



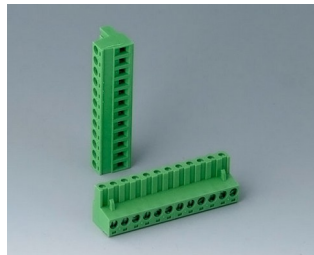
B6602222
Plug header, block 5.08
PA 6 (UL 94 V-0)



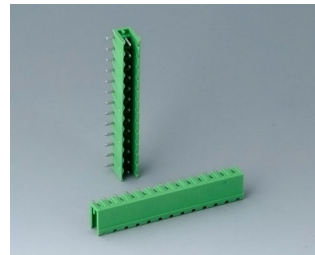
B6602223
Plug header, block 5.08
PA 6 (UL 94 V-0)



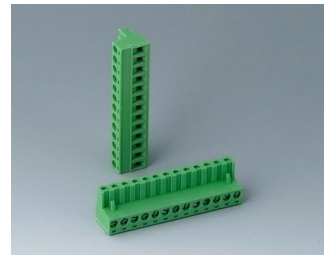
B6603222
Plug header, block 5.08
PA 6 (UL 94 V-0)



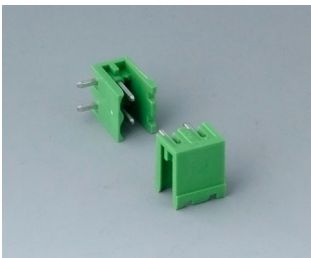
B6603223
Plug header, block 5.08
PA 6 (UL 94 V-0)



B6605222
Plug header, block 5.08
PA 6 (UL 94 V-0)



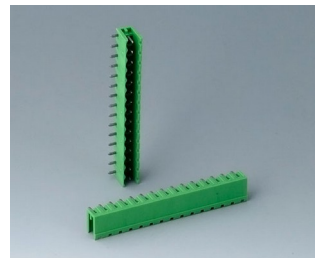
B6605223
Plug header, block 5.08
PA 6 (UL 94 V-0)



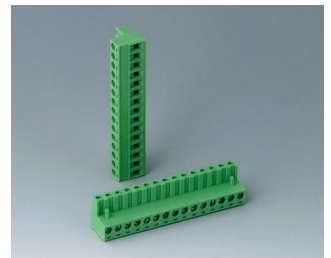
B6606222
Plug header, block 5.08
PA 6 (UL 94 V-0)



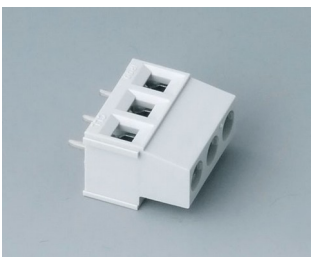
B6606223
Plug header, block 5.08
PA 6 (UL 94 V-0)



B6607222
Plug header, block 5.08
PA 6 (UL 94 V-0)



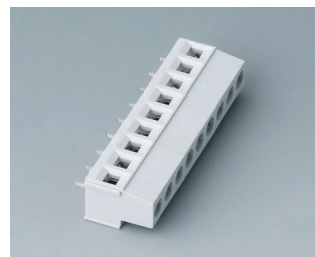
B6607223
Plug header, block 5.08
PA 6 (UL 94 V-0)



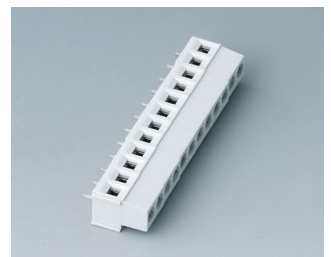
B6800650
Terminal block, block 5.08
PA 68 (UL 94 V-0)
light grey



B6801650
Terminal block, block 5.08
PA 68 (UL 94 V-0)
light grey

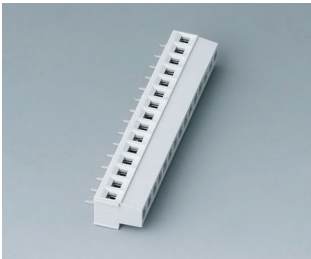


B6802650
Terminal block, block 5.08
PA 68 (UL 94 V-0)
light grey



B6803650
Terminal block, block 5.08
PA 68 (UL 94 V-0)
light grey

RAILTEC C



B6804650
Terminal block, block 5.08
PA 68 (UL 94 V-0)
light grey

Accessory "terminal guards"



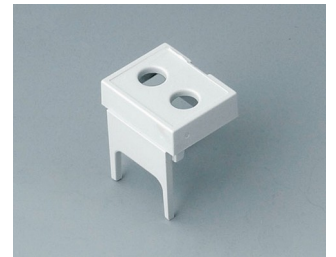
B6800111
Terminal guards, closed
PC (UL 94 V-0)
light grey



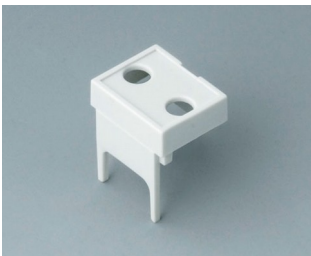
B6800112
Terminal guards, perforated,
5.08
PC (UL 94 V-0)
light grey



B6800113
Terminal guards, with holes, 5.08
PC (UL 94 V-0)
light grey



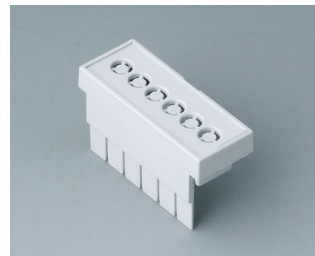
B6800114
Terminal guards, with holes, 7.5
& 7.62
PC (UL 94 V-0)
light grey



B6800115
Terminal guards, with holes,
10.16
PC (UL 94 V-0)
light grey



B6801111
Terminal guards, closed
PC (UL 94 V-0)
light grey



B6801112
Terminal guards, perforated,
5.08
PC (UL 94 V-0)
light grey



B6801113
Terminal guards, with holes, 5.08
PC (UL 94 V-0)
light grey



B6801114
Terminal guards, with holes, 7.5
& 7.62
PC (UL 94 V-0)
light grey



B6801115
Terminal guards, with holes,
10.16
PC (UL 94 V-0)
light grey



B6802111
Terminal guards, closed
PC (UL 94 V-0)
light grey



B6802112
Terminal guards, perforated,
5.08
PC (UL 94 V-0)
light grey

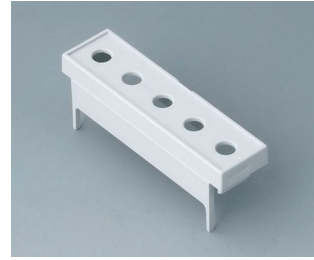
RAILTEC C



B6802113
 Terminal guards, with holes, 5.08
 PC (UL 94 V-0)
 light grey



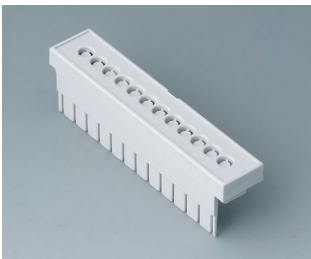
B6802114
 Terminal guards, with holes, 7.5
 & 7.62
 PC (UL 94 V-0)
 light grey



B6802115
 Terminal guards, with holes,
 10.16
 PC (UL 94 V-0)
 light grey



B6803111
 Terminal guards, closed
 PC (UL 94 V-0)
 light grey



B6803112
 Terminal guards, perforated,
 5.08
 PC (UL 94 V-0)
 light grey



B6803113
 Terminal guards, with holes, 5.08
 PC (UL 94 V-0)
 light grey



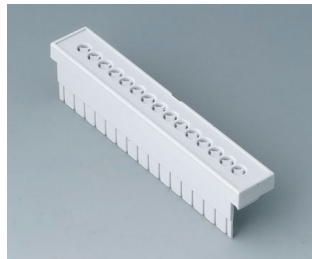
B6803114
 Terminal guards, with holes, 7.5
 & 7.62
 PC (UL 94 V-0)
 light grey



B6803115
 Terminal guards, with holes,
 10.16
 PC (UL 94 V-0)
 light grey



B6804111
 Terminal guards, closed
 PC (UL 94 V-0)
 light grey



B6804112
 Terminal guards, perforated,
 5.08
 PC (UL 94 V-0)
 light grey



B6804113
 Terminal guards, with holes, 5.08
 PC (UL 94 V-0)
 light grey



B6804114
 Terminal guards, with holes, 7.5
 & 7.62
 PC (UL 94 V-0)
 light grey



B6804115
 Terminal guards, with holes,
 10.16
 PC (UL 94 V-0)
 light grey

RAILTEC C

Accessory



B6800100
Front panel, 1 module
PC (UL 94 V-0)
light grey
14x42mm



B6800200
Front panel, 1 module
PC (UL 94 V-0)
transparent
14x42mm



B6801100
Front panel, 2 modules
PC (UL 94 V-0)
light grey
32x42mm



B6801200
Front panel, 2 modules
PC (UL 94 V-0)
transparent
32x42mm



B6802100
Front panel, 3 modules
PC (UL 94 V-0)
light grey
49x42mm



B6802200
Front panel, 3 modules
PC (UL 94 V-0)
transparent
49x42mm



B6803100
Front panel, 4 modules
PC (UL 94 V-0)
light grey
67x42mm



B6803200
Front panel, 4 modules
PC (UL 94 V-0)
transparent
67x42mm



B6804100
Front panel, 5 modules
PC (UL 94 V-0)
light grey
84x42mm



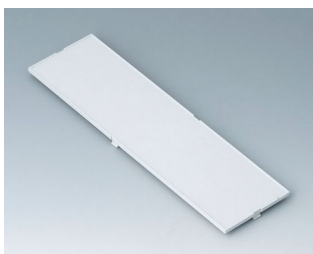
B6804200
Front panel, 5 modules
PC (UL 94 V-0)
transparent
84x42mm



B6805100
Front panel, 6 modules
PC (UL 94 V-0)
light grey
102x42mm



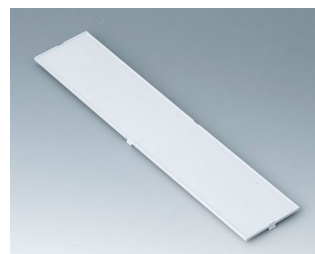
B6805200
Front panel, 6 modules
PC (UL 94 V-0)
transparent
102x42mm



B6806100
Front panel, 9 modules
PC (UL 94 V-0)
light grey
155x42mm



B6806200
Front panel, 9 modules
PC (UL 94 V-0)
transparent
155x42mm



B6807100
Front panel, 12 modules
PC (UL 94 V-0)
light grey
207,5x42mm