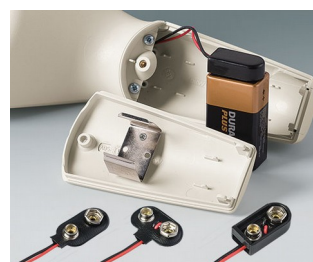
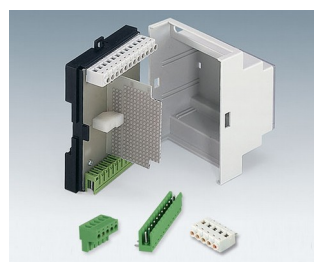
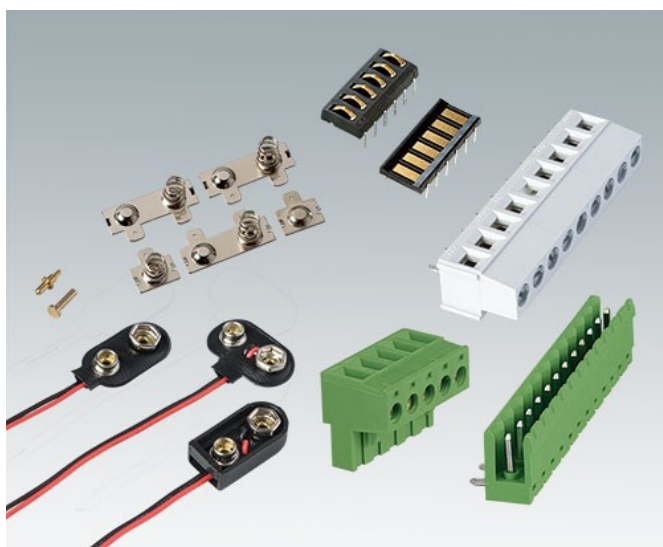
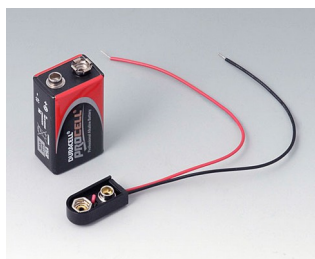


CONTATTI, COLLEGAMENTI

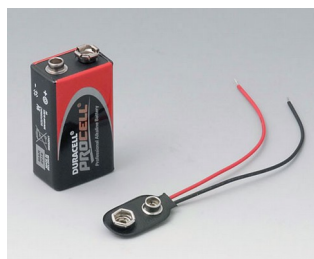
- Qui potete trovare i contatti per la trasmissione senza fili di energia e dati. Le superfici placcate oro sono molto conduttive e resistenti alla corrosione, e garantiscono quindi un contatto affidabile e sicuro.
- Nel programma OKW sono già compresi contenitori nonché basi e supporti per stazioni esterne con sedi preformate per l'inserimento dei contatti. L'utilizzatore può così trasmettere dati ed effettuare senza fili la ricarica di accumulatori e batterie nei dispositivi – la soluzione ideale per dispositivi di comunicazione mobili!
- Molte di contatto per batterie con superfici e geometrie diverse per i contenitori OKW.
- Grande scelta di circuiti stampati e connettori a pin.



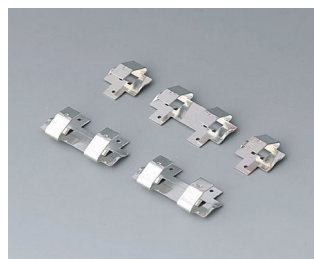
Versioni



A9156002
Plug-in contact, 1 x 9 V (PP3)



A9160003
Plug-in contact, 1 x 9 V (PP3)



A9161001
Set of battery clips, 4 x AA
Steel
tin-plated



A9161002
Set of battery clips, 2 x 9 V or 4 x AA
Steel
tin-plated

CONTATTI, COLLEGAMENTI



A9174006
Set of battery clips, 1 x 9 V
Steel
tin-plated



A9190002
Set of battery clips,
2xN/2xAA/2xAAA
Steel
tin-plated



A9190003
Set of battery clips,
2xN/2xAA/2xAAA
Steel
nickel-plated



A9190010
Set of battery clips, 4 x AA
Steel
nickel-plated



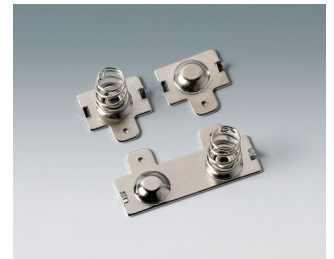
A9190011
Set of battery clips, 2 x AA
Steel
nickel-plated



A9190012
Set of battery clips, 4 x AA
Steel
nickel-plated



A9190013
Set of battery clips, 4 x AA
Steel
nickel-plated



A9190014
Set of battery clips, 2 x AA
Steel
nickel-plated



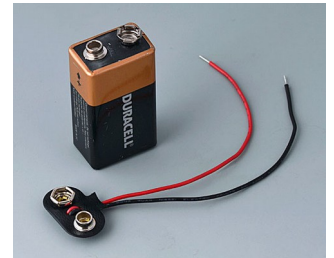
A9190015
Set of battery clips, 2 x AA
Steel
nickel-plated



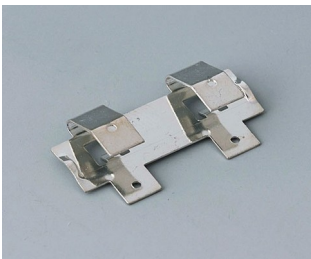
A9190023
Set of battery clips, 3 x AA
Steel
nickel-plated



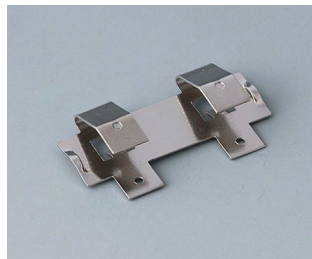
A9190024
Set of battery clips, 3 x AAA
Steel
nickel-plated



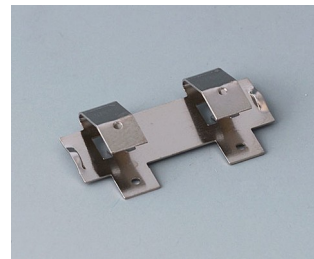
A9193002
Plug-in contacts, 1 x 9 V (PP3)



A9193003
Battery-clips, double contact
Steel
tin-plated



A9193005
Battery clips, double contact
Steel
nickel-plated



A9193008
Battery clips, double contact
CuBe
nickel-plated



A9193013
Battery-clips, double contact
Steel
nickel-plated

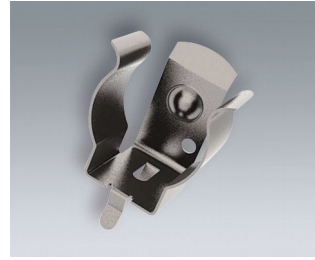
CONTATTI, COLLEGAMENTI



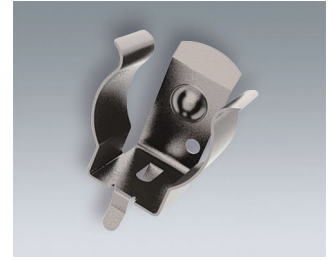
A9193014
 Battery-clips, double contact
 Steel
 nickel-plated



A9193030
 Contact pin
 gold-plated



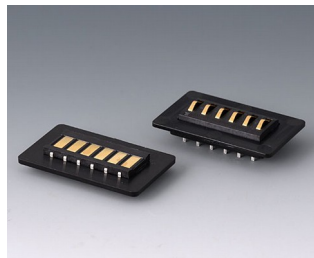
A9193035
 Battery clip, AA
 Steel
 nickel-plated



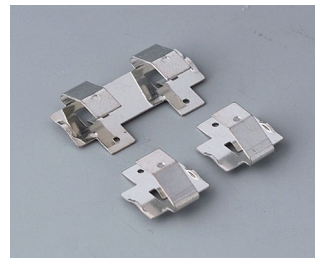
A9193036
 Battery clip, AAA
 Steel
 nickel-plated



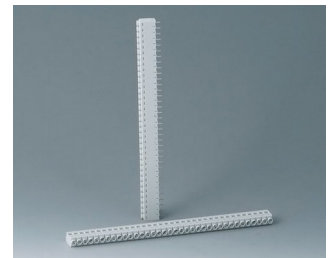
A9193042
 Mounting plates for contacts
 ABS (UL 94 HB)
 black RAL 9005



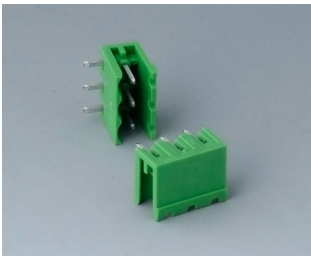
A9193044
 Contacting kit, 6-pin
 ABS (UL 94 HB)
 black RAL 9005



A9194001
 Set of battery clips, 2 x AA
 Steel
 tin-plated



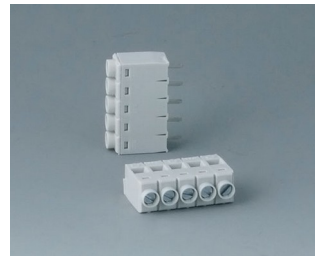
B6600111
 Terminal block, block 5.0
 PA 68 (UL 94 V-0)
 light grey



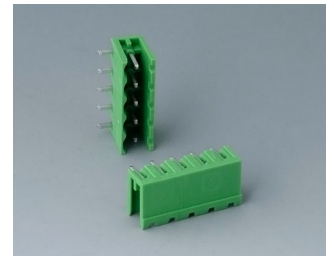
B6600222
 Plug header, block 5.08
 PA 68 (UL 94 V-0)



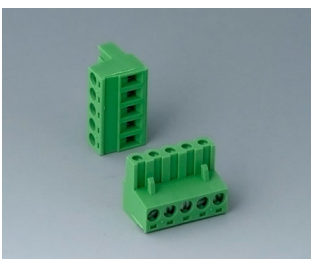
B6600223
 Plug header, block 5.08
 PA 68 (UL 94 V-0)



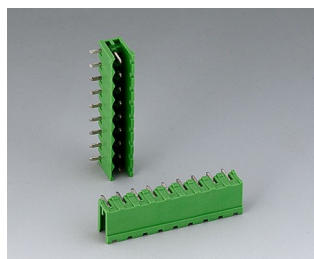
B6601111
 Terminal block, block 5.0
 PA 68 (UL 94 V-0)



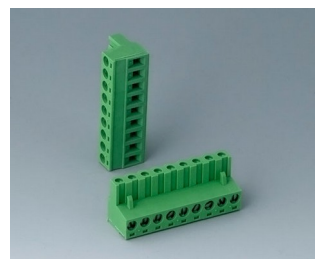
B6601222
 Plug header, block 5.08
 PA 6 (UL 94 V-0)



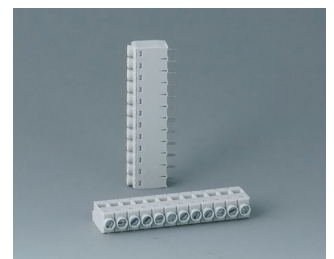
B6601223
 Plug header, block 5.08
 PA 6 (UL 94 V-0)



B6602222
 Plug header, block 5.08
 PA 6 (UL 94 V-0)

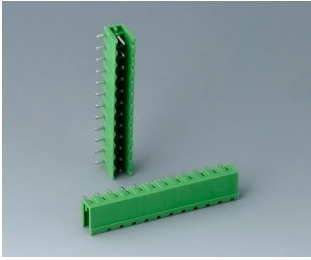


B6602223
 Plug header, block 5.08
 PA 6 (UL 94 V-0)

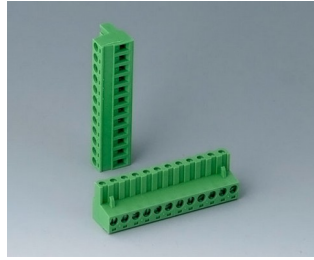


B6603111
 Terminal block, block 5.0
 PA 68 (UL 94 V-0)

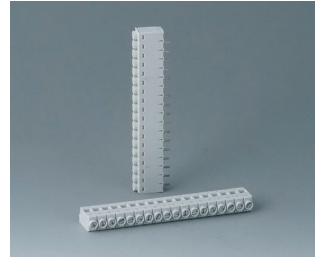
CONTATTI, COLLEGAMENTI



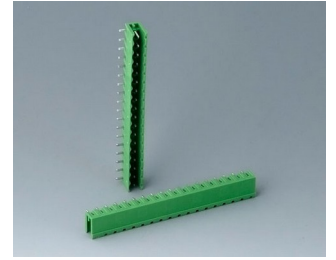
B6603222
 Plug header, block 5.08
 PA 6 (UL 94 V-0)



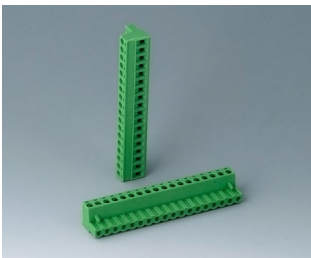
B6603223
 Plug header, block 5.08
 PA 6 (UL 94 V-0)



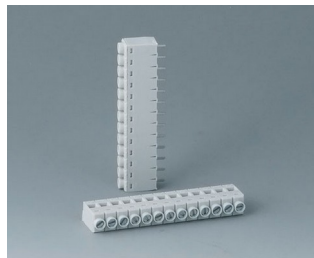
B6604111
 Terminal block, block 5.0
 PA 68 (UL 94 V-0)



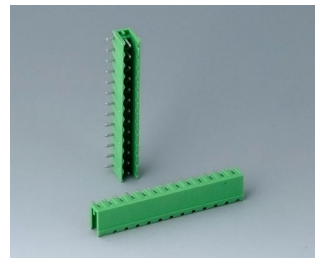
B6604222
 Plug header, block 5.08
 PA 68 (UL 94 V-0)



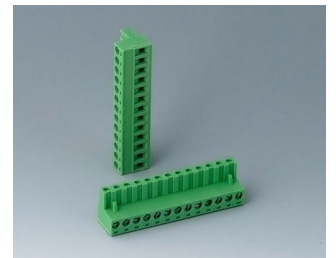
B6604223
 Plug header, block 5.08
 PA 68 (UL 94 V-0)



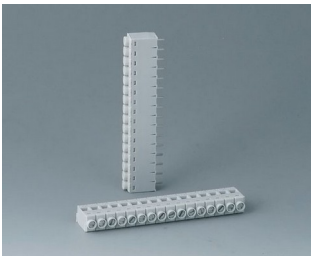
B6605111
 Terminal block, block 5.0
 PA 68 (UL 94 V-0)



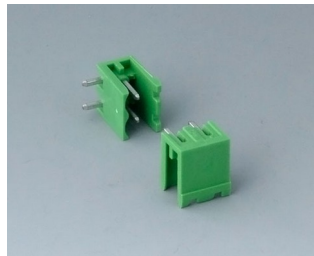
B6605222
 Plug header, block 5.08
 PA 6 (UL 94 V-0)



B6605223
 Plug header, block 5.08
 PA 6 (UL 94 V-0)



B6606111
 Terminal block, block 5.0
 PA 68 (UL 94 V-0)



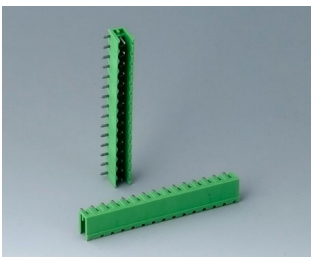
B6606222
 Plug header, block 5.08
 PA 6 (UL 94 V-0)



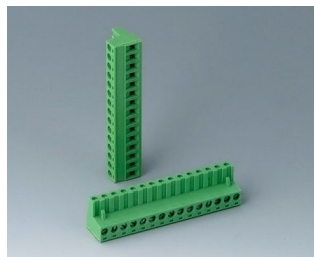
B6606223
 Plug header, block 5.08
 PA 6 (UL 94 V-0)



B6607111
 Terminal block, block 5.0
 PA 68 (UL 94 V-0)



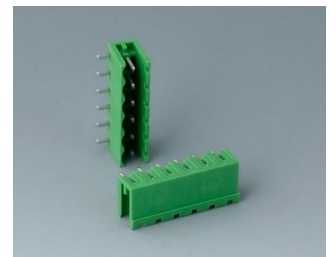
B6607222
 Plug header, block 5.08
 PA 6 (UL 94 V-0)



B6607223
 Plug header, block 5.08
 PA 6 (UL 94 V-0)

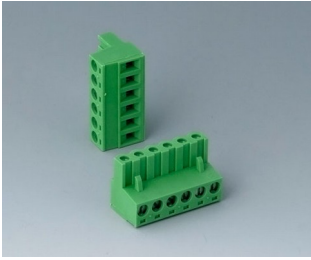


B6608111
 Terminal block, block 5.0
 PA 68 (UL 94 V-0)

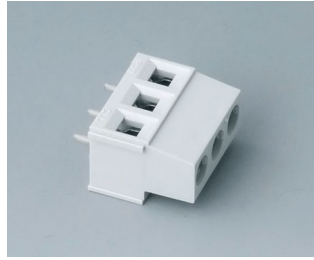


B6608222
 Plug header, block 5.08
 PA 68 (UL 94 V-0)

CONTATTI, COLLEGAMENTI



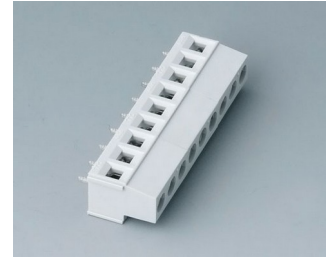
B6608223
Plug header, block 5.08
PA 68 (UL 94 V-0)



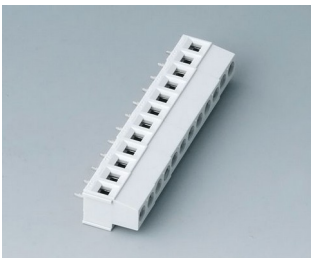
B6800650
Terminal block, block 5.08
PA 68 (UL 94 V-0)
light grey



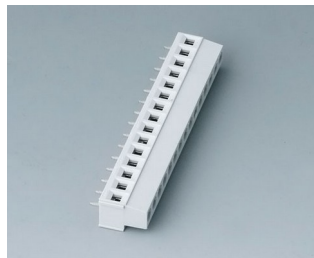
B6801650
Terminal block, block 5.08
PA 68 (UL 94 V-0)
light grey



B6802650
Terminal block, block 5.08
PA 68 (UL 94 V-0)
light grey

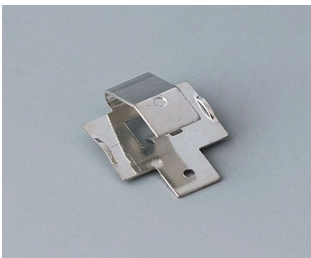


B6803650
Terminal block, block 5.08
PA 68 (UL 94 V-0)
light grey

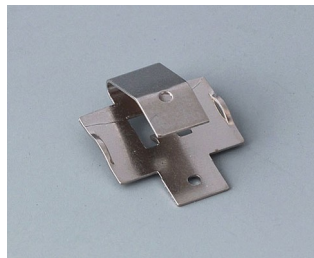


B6804650
Terminal block, block 5.08
PA 68 (UL 94 V-0)
light grey

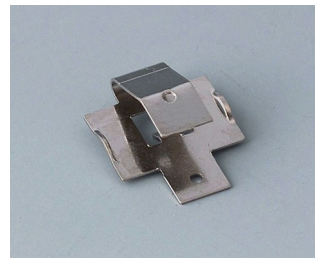
System components to complete



A9193004
Battery-clips, single contact
Steel
tin-plated



A9193006
Battery-clips, single contact
Steel
nickel-plated



A9193009
Battery clips, single contact
CuBe
nickel-plated



A9193011
Battery-clips, single contact
Steel
nickel-plated



A9193012
Battery-clips, single contact
Steel
nickel-plated

CONTATTI, COLLEGAMENTI

Accessory to complete



A9193031
Spring contact
gold-plated



A9193032
Spring contact

Accessory "battery"

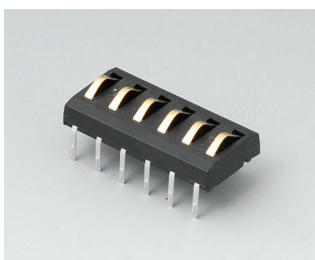


A9193033
Polarity reversal protection
device, positive terminal AA
ABS (UL 94 HB)
off-white RAL 9002

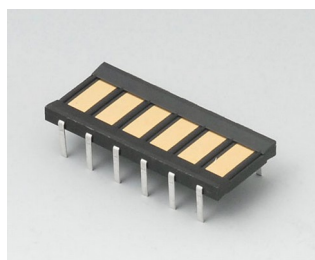


A9193034
Polarity reversal protection
device, positive terminal AAA
ABS (UL 94 HB)
off-white RAL 9002

Accessory



A9178007
Contacts, male
gold-plated



A9178008
Contacts, female
gold-plated

Salvo modifiche tecniche. © OKW Gehäusesysteme, Buchen/Germania.