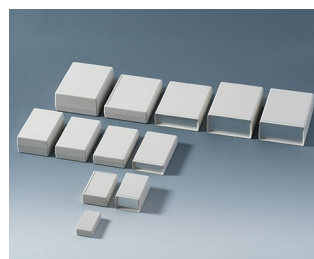


# CONTENITORI A GUSCIO

## Contentore universale per strumentazione

Il programma di contenitori a guscio è disponibile in dimensioni, altezze e tipi diversi. Scegliete il contenitore che risponde perfettamente alle vostre esigenze specifiche!

- 51 contenitori in 3 tipi diversi:
  - Tipo V** – lato frontale aperto, lato posteriore chiuso
  - Tipo O** – lato frontale aperto, lato posteriore aperto
  - Tipo G** – lato frontale chiuso, lato posteriore chiuso
- Elevata stabilità grazie alle giunzioni maschio e femmina su tutto il perimetro
- Listelli di guida per il montaggio verticale di pareti di separazione e circuiti stampati
- Punti di fissaggio in parte superiore e inferiore
- Placca frontale e posteriore in alluminio o PMMA rosso (Plexiglas®) come accessori
- Versioni con vano batteria per 4 x AA, 2 x AA, 1 x 9 V o 2 x 9 V (tipi V e G)
- Versione chiusa (tipo G) anche con superficie di comando incavata per proteggere la tastiera a membrana
- Grado di protezione fino a IP 65 in versione chiusa (tipo G) senza vano batteria se si usa il set di guarnizioni (accessori)
- EMV: i gusci del contenitore possono essere forniti su richiesta anche con alluminio vaporizzato; la realizzazione del contatto può essere migliorata tramite le apposite strisce offerte (accessori)
- Linguette per fissaggio a parete / set supporto da parete come accessori
- Funzioni aggiuntive con accessori universali



# CONTENITORI A GUSCIO

## Esempi di applicazione

- Metrologia e tecnica di regolazione
- Realizzazione di unità di controllo
- Tecnica medica e di laboratorio
- Periferiche e dispositivi interfaccia
- Scatole switch e modem



Magnetic metal detector



System for leak detection in leisure vehicles



Teleservice Gateway MGW/865

## Modifiche specifiche del cliente

Che caratteristiche deve avere il vostro prodotto personalizzato? Su richiesta vi forniamo i contenitori e manopole pronti per il montaggio e con tutte le modifiche e le caratteristiche specifiche.

Opzioni prodotto per Contenitori a guscio



Lavorazione meccanica



Verniciatura



Stampa



Marcatura laser



Pellicole decorative



Materiale speciale



Protezione CEM



Confezionamento / montaggio

# CONTENITORI A GUSCIO

## Versioni



**A9404331**  
SHELL-TYPE CASES G 85,  
Vers. I  
ABS (UL 94 HB)  
off-white RAL 9002  
45x85x22mm  
IP 65 opt.



**A9404333**  
SHELL-TYPE CASES V 85,  
Vers. I  
ABS (UL 94 HB)  
off-white RAL 9002  
45x85x22mm



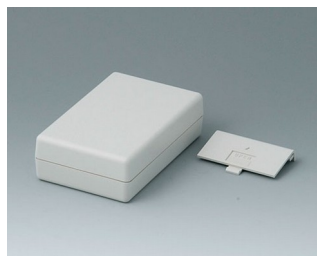
**A9404341**  
SHELL-TYPE CASES G 85,  
Vers. I  
ABS (UL 94 HB)  
off-white RAL 9002  
45x85x33mm  
IP 65 opt.



**A9404441**  
SHELL-TYPE CASES G 85,  
Vers. I  
ABS (UL 94 HB)  
off-white RAL 9002  
45x85x45mm  
IP 65 opt.



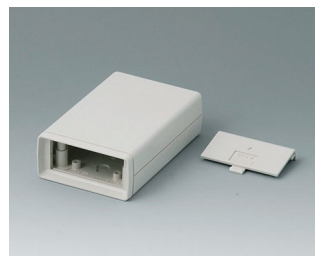
**A9406331**  
SHELL-TYPE CASES G 110,  
Vers. I  
ABS (UL 94 HB)  
off-white RAL 9002  
72x114x33mm  
IP 65 opt.



**A9406332**  
SHELL-TYPE CASES G 110,  
Vers. II  
ABS (UL 94 HB)  
off-white RAL 9002  
72x114x33mm



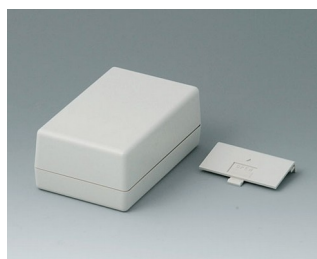
**A9406333**  
SHELL-TYPE CASES V 110,  
Vers. I  
ABS (UL 94 HB)  
off-white RAL 9002  
72x114x33mm



**A9406334**  
SHELL-TYPE CASES V 110,  
Vers. II  
ABS (UL 94 HB)  
off-white RAL 9002  
72x114x33mm



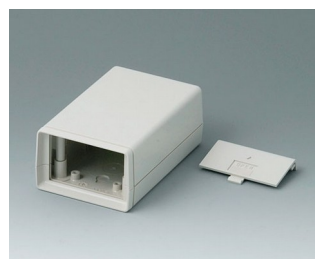
**A9406341**  
SHELL-TYPE CASES G 110,  
Vers. I  
ABS (UL 94 HB)  
off-white RAL 9002  
72x114x45mm  
IP 65 opt.



**A9406342**  
SHELL-TYPE CASES G 110,  
Vers. II  
ABS (UL 94 HB)  
off-white RAL 9002  
72x114x45mm



**A9406343**  
SHELL-TYPE CASES V 110,  
Vers. I  
ABS (UL 94 HB)  
off-white RAL 9002  
72x114x45mm

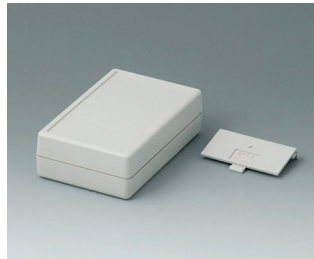


**A9406344**  
SHELL-TYPE CASES V 110,  
Vers. II  
ABS (UL 94 HB)  
off-white RAL 9002  
72x114x45mm

# CONTENITORI A GUSCIO



**A9406351**  
SHELL-TYPE CASES G 110,  
Vers. I  
ABS (UL 94 HB)  
off-white RAL 9002  
72x114x33,5mm  
IP 65 opt.



**A9406352**  
SHELL-TYPE CASES G 110,  
Vers. II  
ABS (UL 94 HB)  
off-white RAL 9002  
72x114x33,5mm



**A9406441**  
SHELL-TYPE CASES G 110,  
Vers. I  
ABS (UL 94 HB)  
off-white RAL 9002  
72x114x57mm  
IP 65 opt.



**A9406443**  
SHELL-TYPE CASES V 110,  
Vers. I  
ABS (UL 94 HB)  
off-white RAL 9002  
72x114x57mm



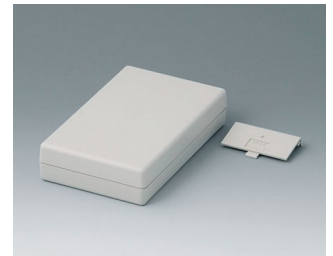
**A9408330**  
SHELL-TYPE CASES O 155,  
Vers. I  
ABS (UL 94 HB)  
off-white RAL 9002  
95x158x33mm



**A9408331**  
SHELL-TYPE CASES G 155,  
Vers. I  
ABS (UL 94 HB)  
off-white RAL 9002  
95x158x33mm  
IP 65 opt.



**A9408333**  
SHELL-TYPE CASES V 155,  
Vers. I  
ABS (UL 94 HB)  
off-white RAL 9002  
95x158x33mm



**A9408335**  
SHELL-TYPE CASES G 155,  
Vers. IV  
ABS (UL 94 HB)  
off-white RAL 9002  
95x158x33mm



**A9408336**  
SHELL-TYPE CASES V 155,  
Vers. IV  
ABS (UL 94 HB)  
off-white RAL 9002  
95x158x33mm



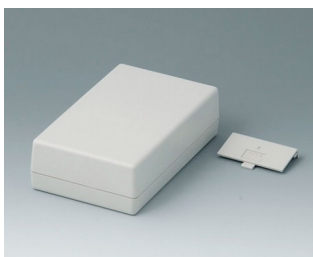
**A9408340**  
SHELL-TYPE CASES O 155,  
Vers. I  
ABS (UL 94 HB)  
off-white RAL 9002  
95x158x45mm



**A9408341**  
SHELL-TYPE CASES G 155,  
Vers. I  
ABS (UL 94 HB)  
off-white RAL 9002  
95x158x45mm  
IP 65 opt.



**A9408343**  
SHELL-TYPE CASES V 155,  
Vers. I  
ABS (UL 94 HB)  
off-white RAL 9002  
95x158x45mm



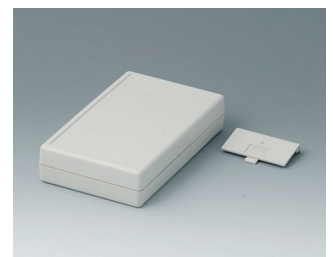
**A9408345**  
SHELL-TYPE CASES G 155,  
Vers. IV  
ABS (UL 94 HB)  
off-white RAL 9002  
95x158x45mm



**A9408346**  
SHELL-TYPE CASES V 155,  
Vers. IV  
ABS (UL 94 HB)  
off-white RAL 9002  
95x158x45mm



**A9408351**  
SHELL-TYPE CASES G 155,  
Vers. I  
ABS (UL 94 HB)  
off-white RAL 9002  
95x158x33,5mm  
IP 65 opt.



**A9408355**  
SHELL-TYPE CASES G 155,  
Vers. IV  
ABS (UL 94 HB)  
off-white RAL 9002  
95x158x33,5mm



# CONTENITORI A GUSCIO



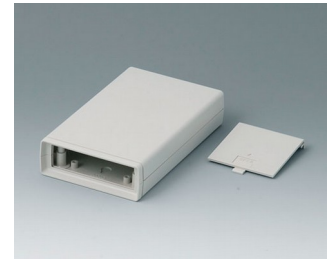
**A9408440**  
SHELL-TYPE CASES O 155,  
Vers. I  
ABS (UL 94 HB)  
off-white RAL 9002  
95x155x57mm



**A9408441**  
SHELL-TYPE CASES G 155,  
Vers. I  
ABS (UL 94 HB)  
off-white RAL 9002  
95x158x57mm  
IP 65 opt.



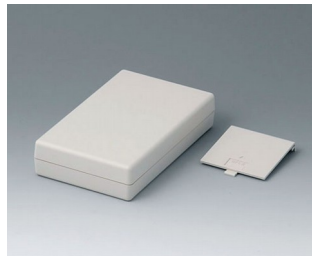
**A9408443**  
SHELL-TYPE CASES V 155,  
Vers. I  
ABS (UL 94 HB)  
off-white RAL 9002  
95x158x57mm



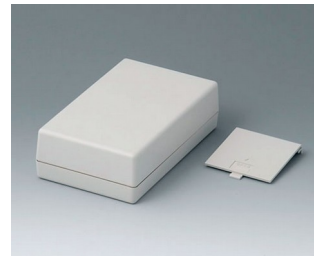
**A9408638**  
SHELL-TYPE CASES V 155,  
Vers. V  
ABS (UL 94 HB)  
off-white RAL 9002  
95x158x33mm



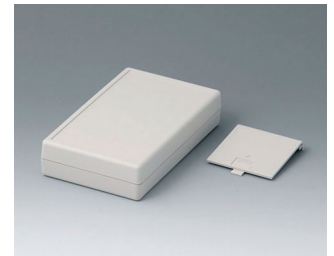
**A9408648**  
SHELL-TYPE CASES V 155,  
Vers. V  
ABS (UL 94 HB)  
off-white RAL 9002  
95x158x45mm



**A9408737**  
SHELL-TYPE CASES G 155,  
Vers. V  
ABS (UL 94 HB)  
off-white RAL 9002  
95x158x33mm



**A9408747**  
SHELL-TYPE CASES G 155,  
Vers. V  
ABS (UL 94 HB)  
off-white RAL 9002  
95x158x45mm



**A9408757**  
SHELL-TYPE CASES G 155,  
Vers. V  
ABS (UL 94 HB)  
off-white RAL 9002  
95x158x33,5mm



**A9413330**  
SHELL-TYPE CASES O 190,  
Vers. I  
ABS (UL 94 HB)  
off-white RAL 9002  
138x190x45mm



**A9413331**  
SHELL-TYPE CASES G 190,  
Vers. I  
ABS (UL 94 HB)  
off-white RAL 9002  
138x190x45mm  
IP 65 opt.



**A9413333**  
SHELL-TYPE CASES V 190,  
Vers. I  
ABS (UL 94 HB)  
off-white RAL 9002  
138x190x45mm



**A9413340**  
SHELL-TYPE CASES O 190,  
Vers. I  
ABS (UL 94 HB)  
off-white RAL 9002  
138x190x68mm



**A9413341**  
SHELL-TYPE CASES G 190,  
Vers. I  
ABS (UL 94 HB)  
off-white RAL 9002  
138x190x68mm  
IP 65 opt.



**A9413343**  
SHELL-TYPE CASES V 190,  
Vers. I  
ABS (UL 94 HB)  
off-white RAL 9002  
138x190x68mm



**A9413351**  
SHELL-TYPE CASES G 190,  
Vers. I  
ABS (UL 94 HB)  
off-white RAL 9002  
138x190x45,5mm  
IP 65 opt.



**A9413440**  
SHELL-TYPE CASES O 190,  
Vers. I  
ABS (UL 94 HB)  
off-white RAL 9002  
138x190x91mm

# CONTENITORI A GUSCIO



**A9413441**  
SHELL-TYPE CASES G 190,  
Vers. I  
ABS (UL 94 HB)  
off-white RAL 9002  
138x190x91mm  
IP 65 opt.



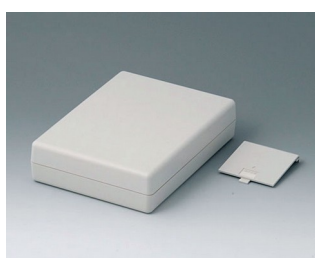
**A9413443**  
SHELL-TYPE CASES V 190,  
Vers. I  
ABS (UL 94 HB)  
off-white RAL 9002  
138x190x91mm



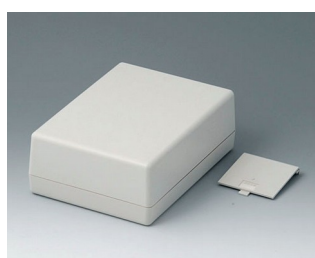
**A9413638**  
SHELL-TYPE CASES V 190,  
Vers. V  
ABS (UL 94 HB)  
off-white RAL 9002  
138x190x45mm



**A9413648**  
SHELL-TYPE CASES V 190,  
Vers. V  
ABS (UL 94 HB)  
off-white RAL 9002  
138x190x68mm



**A9413737**  
SHELL-TYPE CASES G 190,  
Vers. V  
ABS (UL 94 HB)  
off-white RAL 9002  
138x190x45mm

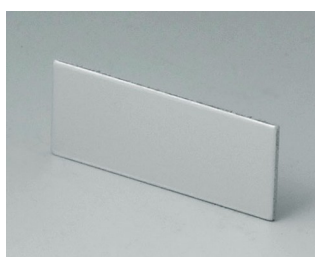


**A9413747**  
SHELL-TYPE CASES G 190,  
Vers. V  
ABS (UL 94 HB)  
off-white RAL 9002  
138x190x68mm

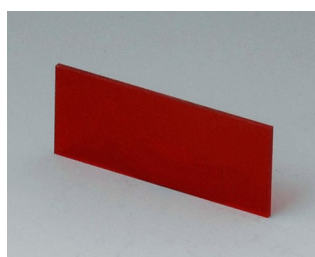


**A9413757**  
SHELL-TYPE CASES G 190,  
Vers. V  
ABS (UL 94 HB)  
off-white RAL 9002  
138x190x45,5mm

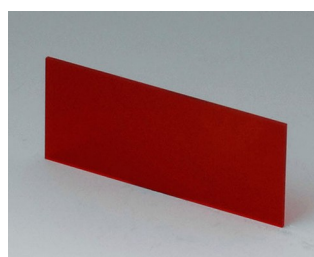
## Accessory to complete



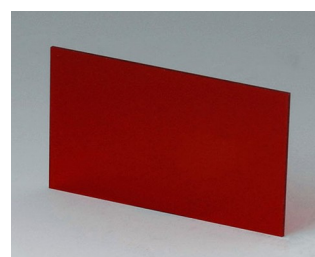
**A9104111**  
Front / rear panel V 85  
Aluminium  
matt anodised  
36x14,6x1mm



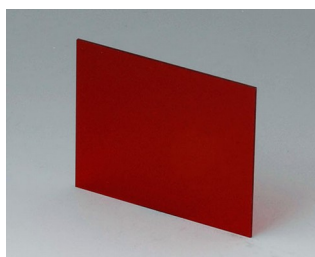
**A9104113**  
Front / rear panel V 85  
Acrylic glass  
red transparent  
36x14,6x1mm



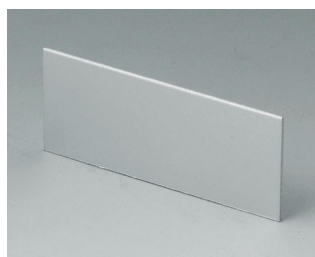
**A9106113**  
Front / rear panel V 110  
Acrylic glass  
red transparent  
59,3x25x1mm



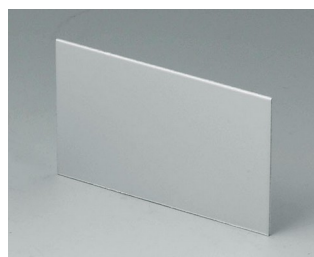
**A9106123**  
Front / rear panel V 110  
Acrylic glass  
red transparent  
59,3x37x1mm



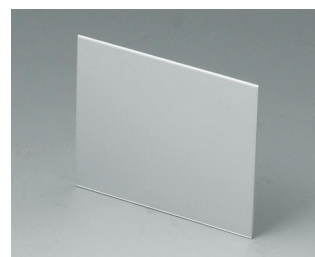
**A9106223**  
Front / rear panel V 110  
Acrylic glass  
red transparent  
59,3x49x1mm



**A9107111**  
Front / rear panel V 110  
Aluminium  
matt anodised  
59,3x25x1mm

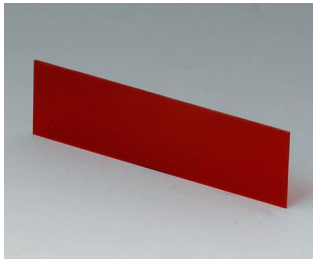


**A9107121**  
Front / rear panel V 110  
Aluminium  
matt anodised  
59,3x37x1mm

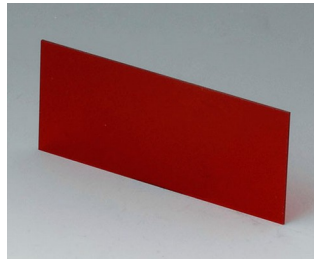


**A9107221**  
Front / rear panel V 110  
Aluminium  
matt anodised  
59,3x49x1mm

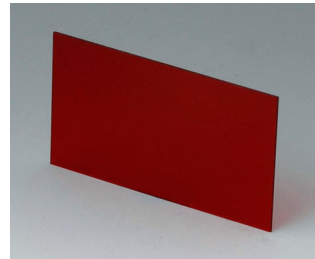
# CONTENITORI A GUSCIO



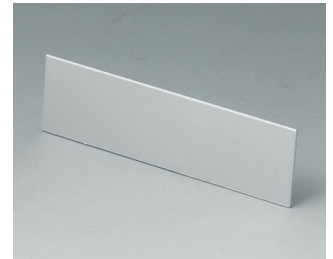
**A9108113**  
Front / rear panel V, Ø 155  
Acrylic glass  
red transparent  
81,9x23,6x1mm



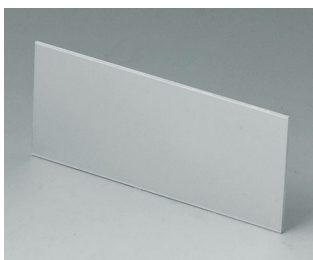
**A9108123**  
Front / rear panel V, Ø 155  
Acrylic glass  
red transparent  
81,9x35,6x1mm



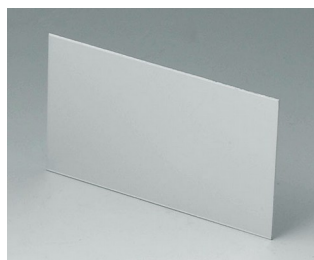
**A9108223**  
Front / rear panel V, Ø 155  
Acrylic glass  
red transparent  
81,9x47,6x1mm



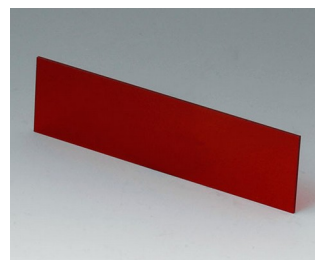
**A9109111**  
Front / rear panel V, Ø 155  
Aluminium  
matt anodised  
81,9x23,6x1mm



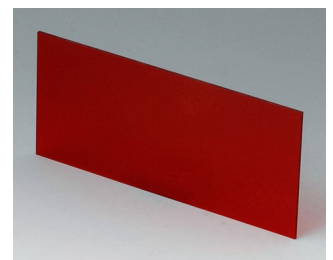
**A9109121**  
Front / rear panel V, Ø 155  
Aluminium  
matt anodised  
81,9x35,6x1mm



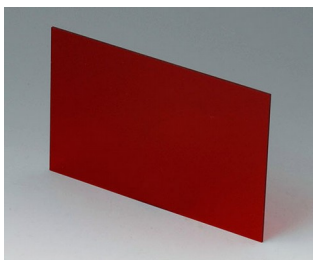
**A9109221**  
Front / rear panel V, Ø 155  
Aluminium  
matt anodised  
81,9x47,6x1mm



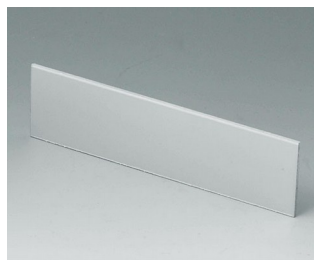
**A9113113**  
Front / rear panel V, Ø 190  
Acrylic glass  
red transparent  
124,2x33,6x1,5mm



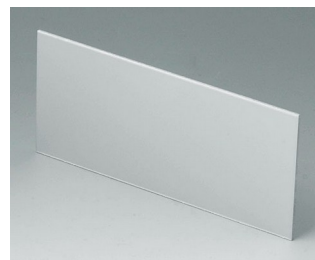
**A9113123**  
Front / rear panel V, Ø 190  
Acrylic glass  
red transparent  
124,2x56,6x1,5mm



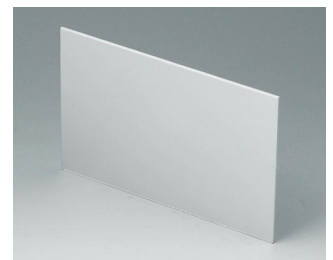
**A9113223**  
Front / rear panel V, Ø 190  
Acrylic glass  
red transparent  
124,2x79,6x1,5mm



**A9114111**  
Front / rear panel V, Ø 190  
Aluminium  
matt anodised  
124,2x33,6x1,5mm

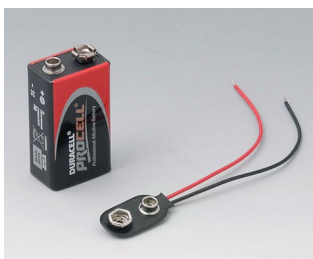


**A9114121**  
Front / rear panel V, Ø 190  
Aluminium  
matt anodised  
124,2x56,6x1,5mm

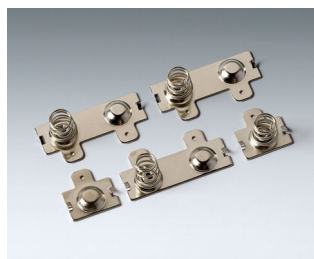


**A9114221**  
Front / rear panel V, Ø 190  
Aluminium  
matt anodised  
124,2x79,6x1,5mm

## Accessory "battery"



**A9160003**  
Plug-in contact, 1 x 9 V (PP3)



**A9190013**  
Set of battery clips, 4 x AA  
Steel  
nickel-plated



**A9190014**  
Set of battery clips, 2 x AA  
Steel  
nickel-plated



**A9250250**  
Battery spacer  
PE foam  
50x25x4mm

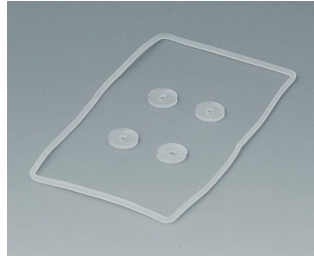


# CONTENITORI A GUSCIO

## Accessory "protection"



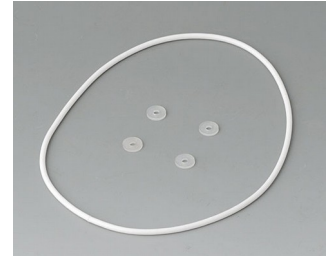
**A9104073**  
 Contact-strips V, G 85  
 Aluminium



**A9104250**  
 Sealing kit G 85



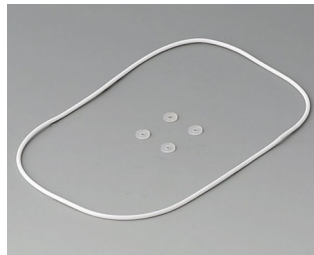
**A9106095**  
 Contact-strips V, G 110  
 Aluminium



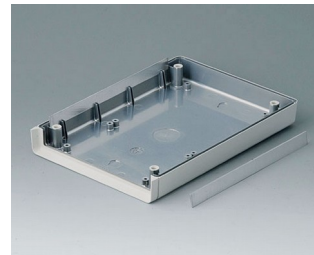
**A9106352**  
 Sealing kit G 110



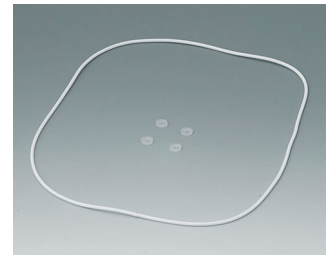
**A9108120**  
 Contact-strips V, O, G 155  
 Aluminium



**A9108486**  
 Sealing kit G 155



**A9113150**  
 Contact-strips V, O, G 190  
 Aluminium



**A9113630**  
 Sealing kit G 190

## Accessory "wall/holder"



**A9204108**  
 Wall mounting brackets  
 PA 6  
 pebble grey RAL 7032



**B1350048**  
 Wall suspension elements  
 ABS (UL 94 HB)  
 pebble grey RAL 7032



**B1360048**  
 Wall suspension elements  
 ABS (UL 94 HB)  
 pebble grey RAL 7032

## Accessory "carrying"



**A9100001**  
 Ring eyelet  
 PA 6  
 volcano



**A9100002**  
 Ring eyelet  
 PA 6  
 volcano



**A9172107**  
 Belt/Pocket clip  
 ABS (UL 94 HB)  
 off-white RAL 9002  
 62x30mm



# CONTENITORI A GUSCIO

## Accessory "screws"



**A0306031**  
Self-tapping screws 3 x 6 mm  
(PZ1)

## Accessory



**A9207150**  
Anti-slide feet 6.5 x 2 mm  
transparent



**A9210290**  
Anti-slide feet 9.5 x 3.8 mm  
transparent



**A9250807**  
Tilt foot bar  
ABS (UL 94 HB)  
off-white RAL 9002



**A9250817**  
Tilt foot bar  
ABS (UL 94 HB)  
off-white RAL 9002

Salvo modifiche tecniche. © OKW Gehäusesysteme, Buchen/Germania.